



## CAMEO BULKHEAD

SKU:2201-45



Transform your salon with the Cameo Bulkhead, a must-have for any hair professional. It includes a convenient bulkhead surface for mounting a shampoo bowl, upper cabinets for storing clean towels, and a lower cabinet with a tilt-out bin for soiled towels. Plus, choose from a range of stunning laminate colors to match your salon's style. Elevate your beauty space with this all-in-one station, complete with a full backsplash.

### TECHNICAL INFORMATION

---

- 45"W x 10"D x 75"H
- 24" Bowl mounting surface
- Tilt-out clean towel storage
- Tilt-out soiled towel hamper
- Backsplash
- Upper storage cabinet w/ adjustable shelves
- Pictured CBI9 shampoo bowl is ordered separately

### SHIPPING INFORMATION

---

Item generally ships via Freight(Truck) service

- Weight: 250 lbs
- Dimensions: 54"L x 32"W x 48"H

### WARRANTY

---

#### 3 Year:

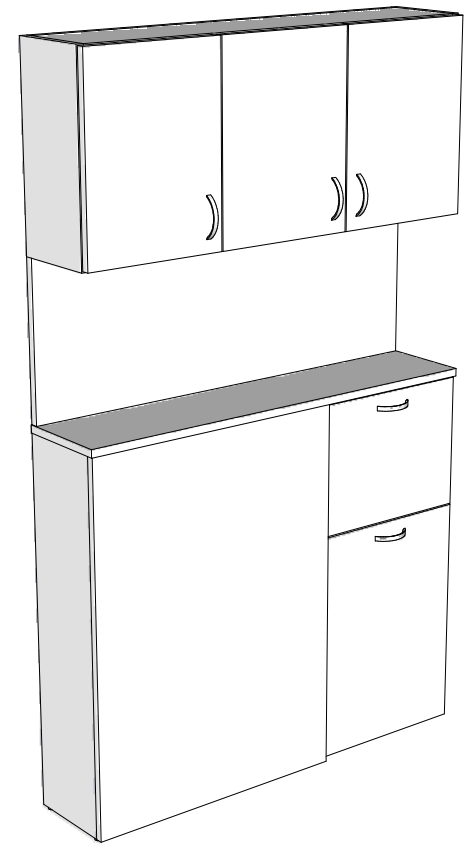
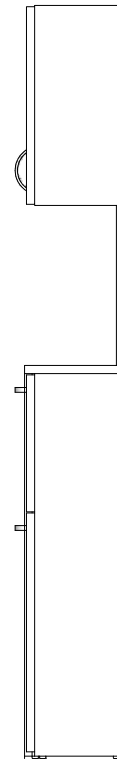
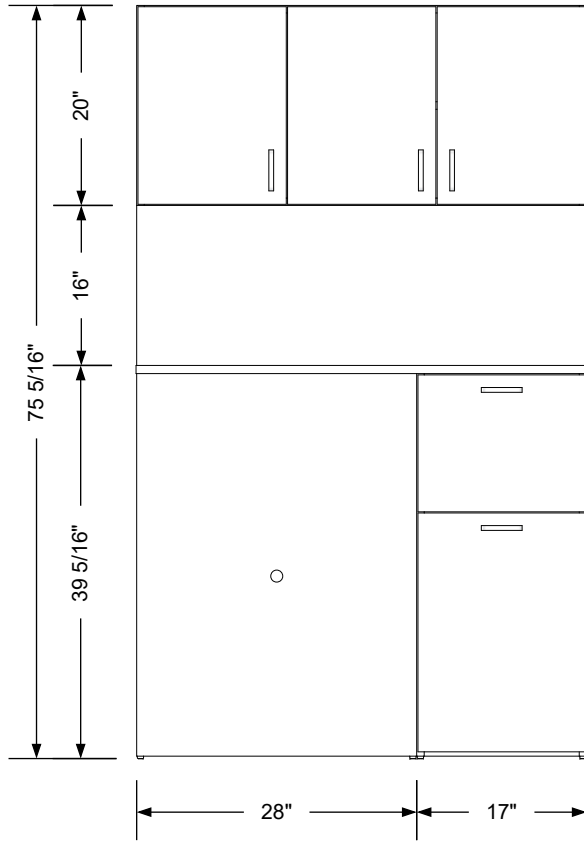
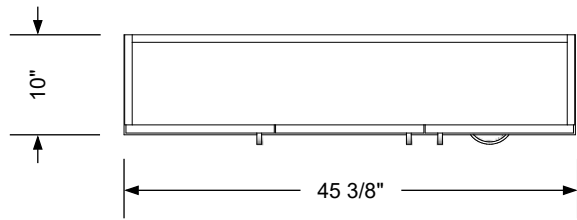
- Molded urethane arms
- Cabinet drawer-slides

#### 2 Year:

- All Shampoo Bowls
- Vacuum breakers

#### 1 Year:

- All remaining components, unless noted otherwise




**Additional Information**

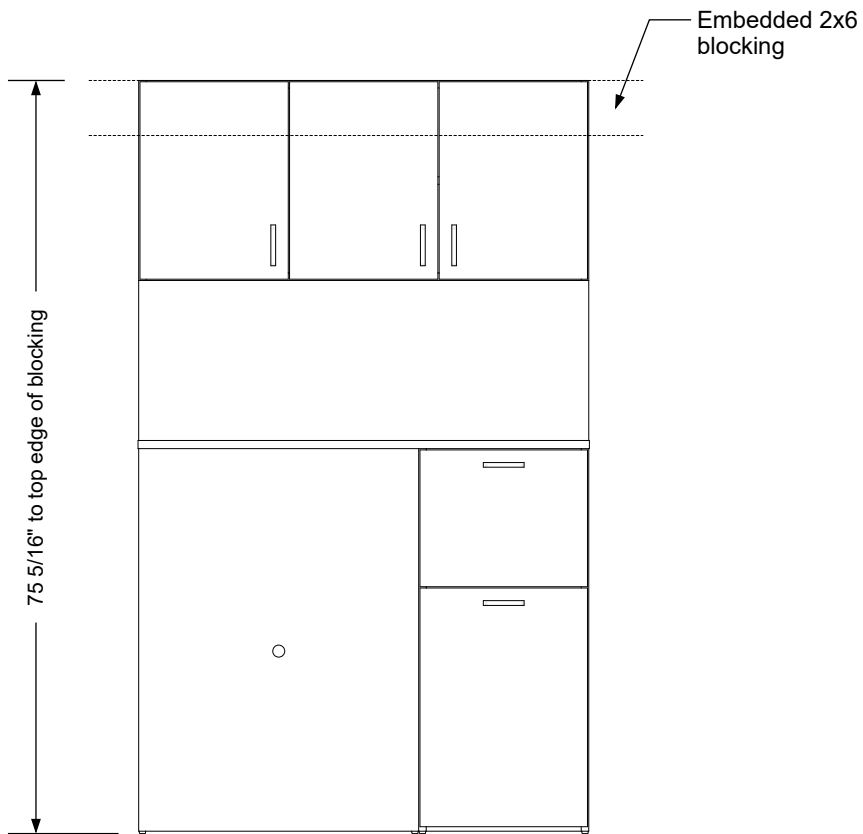
Assembly required - yes  
 Electrical required - no  
 Plumbing required - yes  
 Wall blocking required - yes  
 COM yardage/laminate usage -  
 4" h laminated plywood toe + 1/4" h glides  
 Other (specify) - n/a  
 Other (specify) - n/a

**Specification Drawing**

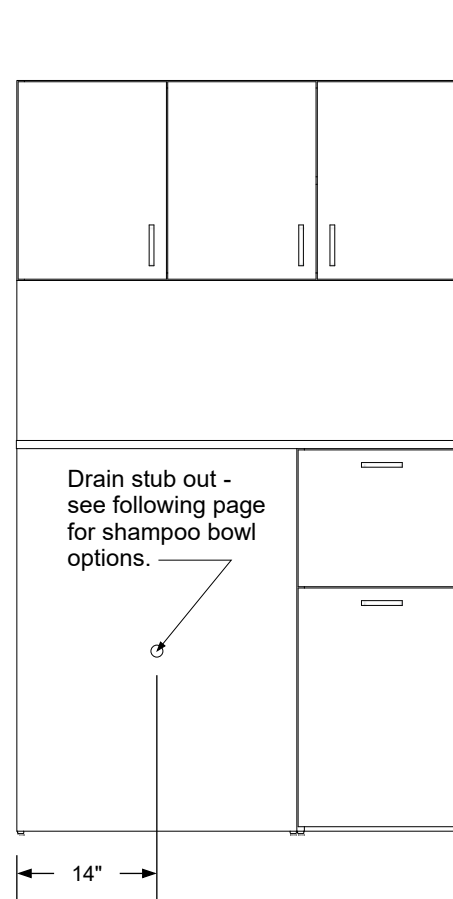
This **Specification Drawing** is intended for communicating the basic description, function, appearance, dimensions, features, and installation of an item as manufactured by Collins Manufacturing Company. Because this drawing does not contain project specific information such as quantities, finishes, or options, it is not an approval drawing and does not require a signature. This drawing remains the property of Collins Manufacturing Company and must not be used against the interests of Collins Manufacturing Company.

**Product Information**

		Collins Manufacturing 2000 Bowser Road Cookeville, TN 38506	
Name: <b>Cameo Bulkhead</b>			
Size: <b>NTS</b>	Part Number: <b>2201-45</b>	Drawn By: <b>Eng</b>	
Prepared Date: <b>5/14/20</b>	Revision Date: <b>Date</b>	Revision Number: <b>Rev #</b>	Sheet: <b>1 of 3</b>



**Wall blocking detail**



**Plumbing stub out detail**

**Additional Information**

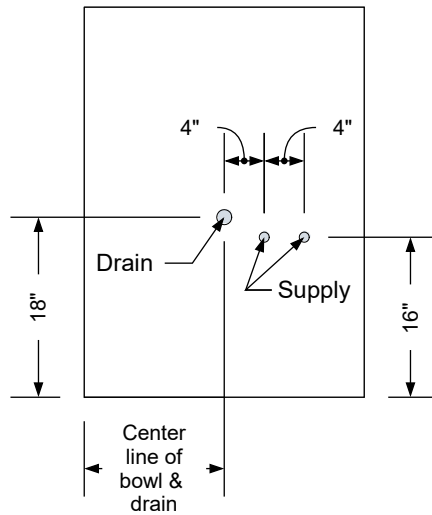
Assembly required - yes  
 Electrical required - no  
 Plumbing required - yes  
 Wall blocking required - yes  
 COM yardage/laminate usage - 57 sf  
 No toe kick + 1/4" h glides  
 Other (specify) - n/a  
 Other (specify) - n/a

**Specification Drawing**

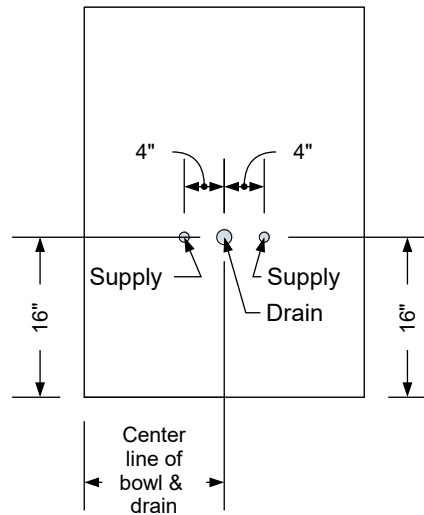
This **Specification Drawing** is intended for communicating the basic description, function, appearance, dimensions, features, and installation of an item as manufactured by Collins Manufacturing Company. Because this drawing does not contain project specific information such as quantities, finishes, or options, it is not an approval drawing and does not require a signature. This drawing remains the property of Collins Manufacturing Company and must not be used against the interests of Collins Manufacturing Company.

**Product Information**

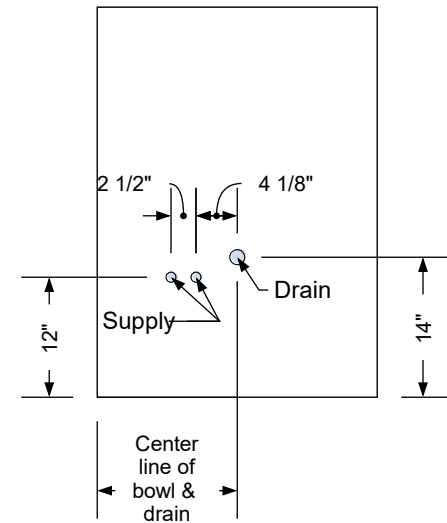
		Collins Manufacturing 2000 Bowser Road Cookeville, TN 38506	
Name: <b>Cameo Bulkhead</b>			
Size: <b>NTS</b>	Part Number: <b>2201-45</b>	Drawn By: <b>Eng</b>	
Prepared Date: <b>5/14/20</b>	Revision Date: <b>Date</b>	Revision Number: <b>Rev #</b>	Sheet: <b>2 of 3</b>



**Standard Shampoo Bowl**



**T100 w/ Tilting Shampoo Bowl**



**K100 Adjust-A-Sink Shampoo Bowl**

**Typical Collins Shampoo Bowl Options**


**Additional Information**

Assembly required - yes  
 Electrical required - no  
 Plumbing required - yes  
 Wall blocking required - yes  
 COM yardage/laminate usage - 57 sf  
 No toe kick + 1/4" h glides  
 Other (specify) - n/a  
 Other (specify) - n/a

**Specification Drawing**

This **Specification Drawing** is intended for communicating the basic description, function, appearance, dimensions, features, and installation of an item as manufactured by Collins Manufacturing Company. Because this drawing does not contain project specific information such as quantities, finishes, or options, it is not an approval drawing and does not require a signature. This drawing remains the property of Collins Manufacturing Company and must not be used against the interests of Collins Manufacturing Company.

**Product Information**

		Collins Manufacturing 2000 Bowser Road Cookeville, TN 38506	
		Name: <b>Cameo Bulkhead</b>	
Size: <b>NTS</b>	Part Number: <b>2201-45</b>	Drawn By: <b>Eng</b>	
Prepared Date: <b>5/14/20</b>	Revision Date: <b>Date</b>	Revision Number: <b>Rev #</b>	Sheet: <b>3 of 3</b>