



VEECO DOUBLE BACKWASH

SKU:2205-64



Our Veeco Double Backwash shampoo station is made with a modern, sleek design that will look great in your salon or spa. With its easy to clean surface, stainless steel top and rear storage for towels, it's perfect for a professional hair wash.

TECHNICAL INFORMATION

- 64.5"W x 48"D x 38.5"H
- Stainless steel top
- Two articulating porcelain shampoo bowls
- Rear storage with soiled towel storage
- Matching chair tops with adjustable backs and sliding seats

SHIPPING INFORMATION

Item generally ships via Freight(Truck) service

- Weight: 425 lbs
- Dimensions: 2 pallets

WARRANTY

3 Year:

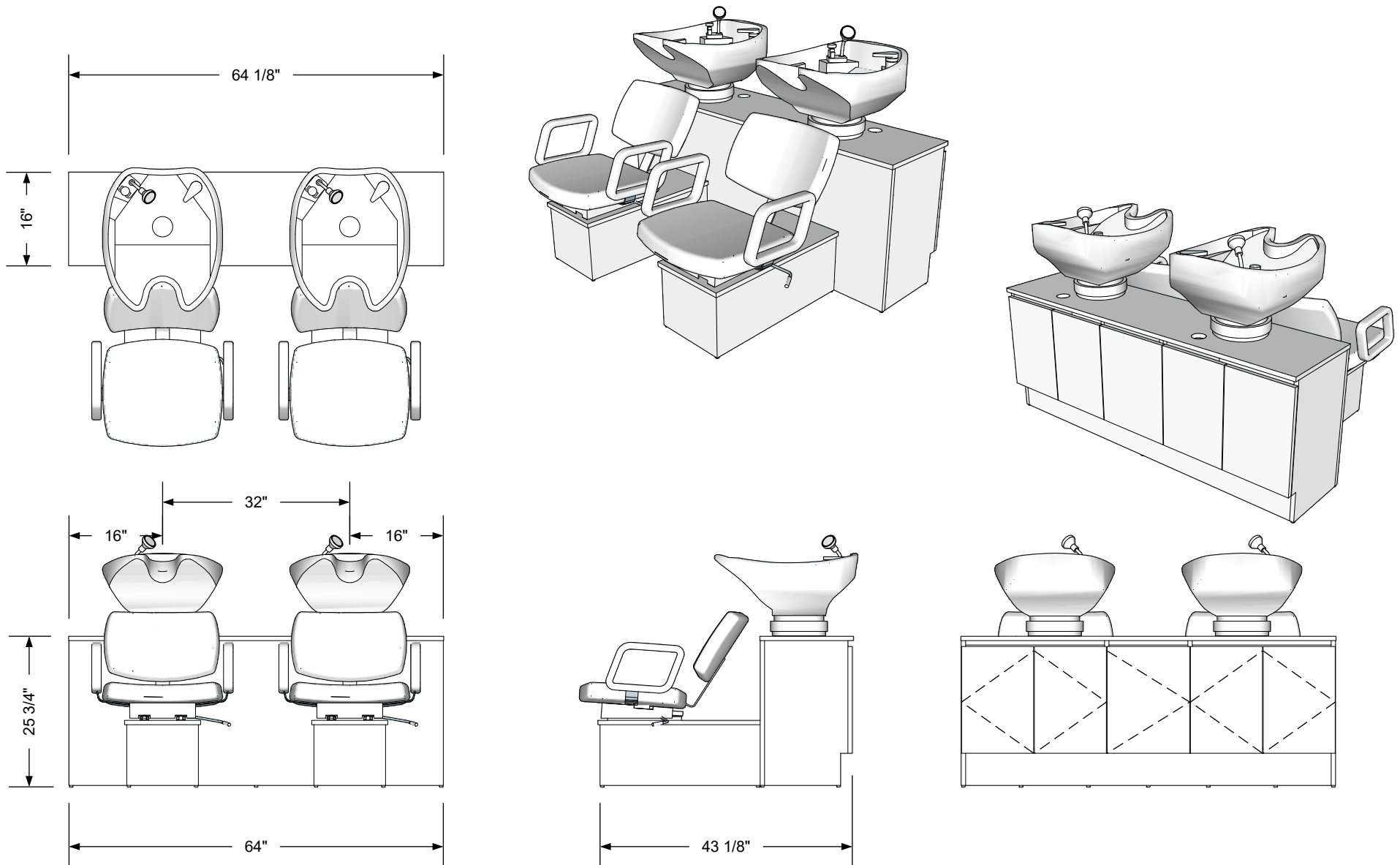
- Molded urethane arms
- Cabinet drawer-slides

2 Year:

- All Shampoo Bowls
- Vacuum breakers

1 Year:

- All remaining components, unless noted otherwise



Additional Information

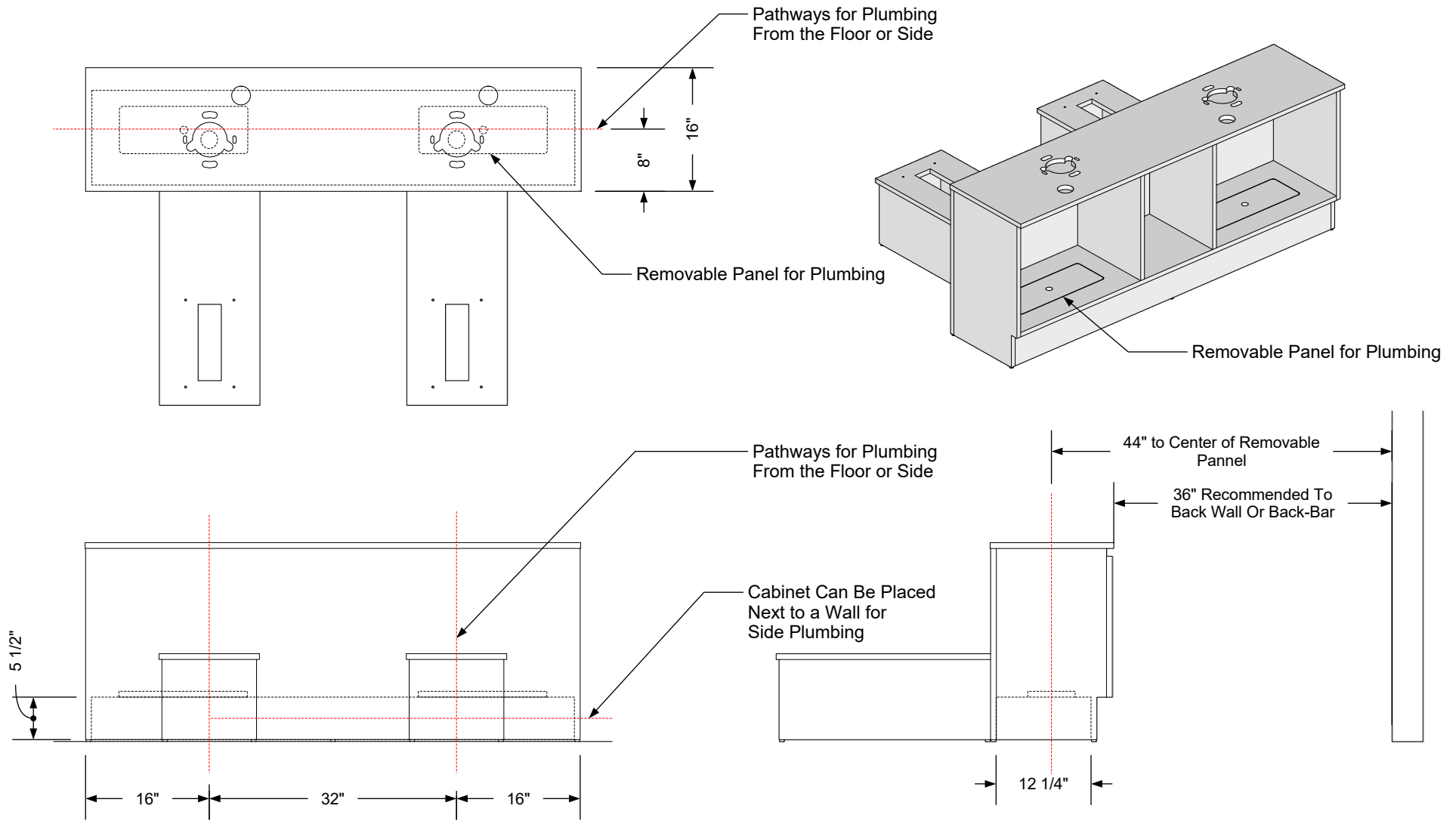
Assembly required - yes
 Electrical required - no
 Plumbing required - yes
 Wall blocking required - no
 COM yardage/laminate usage - 5100 sf
 5.5"h laminated plywood toe + 1/4"h glides
 Other (specify) - n/a
 Other (specify) - n/a

Specification Drawing

This **Specification Drawing** is intended for communicating the basic description, function, appearance, dimensions, features, and installation of an item as manufactured by Collins Manufacturing Company. Because this drawing does not contain project specific information such as quantities, finishes, or options, it is not an approval drawing and does not require a signature. This drawing remains the property of Collins Manufacturing Company and must not be used against the interests of Collins Manufacturing Company.

Product Information

| | | | |
|--|--------------------------------|-------------------------------|----------------------|
| collins Collins Manufacturing 2000 Bowser Road Cookeville, TN 38506 | | | |
| Name: Veeco Double Backwash | | | |
| Size: NTS | Part Number: 2205-64 | Drawn By: Eng | |
| Prepared Date: 5/4/20 | Revision Date: 12/20/20 | Revision Number: Rev 1 | Sheet: 1 of 2 |



Plumbing Stub Out Detail

Shampoo Bowl, Seat & Cabinet Door Omitted For Clarity


Additional Information

Assembly required - yes
 Electrical required - no
 Plumbing required - yes
 Wall blocking required - no
 COM yardage/laminate usage - 5100 sf
 5.5"h laminated plywood toe + 1/4"h glides
 Other (specify) - n/a
 Other (specify) - n/a

Specification Drawing

This **Specification Drawing** is intended for communicating the basic description, function, appearance, dimensions, features, and installation of an item as manufactured by Collins Manufacturing Company. Because this drawing does not contain project specific information such as quantities, finishes, or options, it is not an approval drawing and does not require a signature. This drawing remains the property of Collins Manufacturing Company and must not be used against the interests of Collins Manufacturing Company.

Product Information

| | | | |
|---|-------------------------|------------------------|---------------|
|  Collins Manufacturing 2000 Bowser Road Cookeville, TN 38506 | | | |
| Name: Veeco Double Backwash | | | |
| Size: NTS | Part Number: 2205-64 | Drawn By: Eng | |
| Prepared Date: 5/4/20 | Revision Date: 12/20/20 | Revision Number: Rev 1 | Sheet: 2 of 2 |