



## COL-PRO CENTER

SKU:2241-101

The Colour Pro Color Center for the professional colorist features a large workspace.

### TECHNICAL INFORMATION

---

- 101"W x 25"D x 88"H
- Stainless steel countertop, sink, and back splash
- Custom plastic divider upper color storage cubbies
- Large amounts of lower storage cabinetry
- Four extra wide heavy duty storage drawers

### SHIPPING INFORMATION

---

Item generally ships via Freight(Truck) service

- Weight: 860 lbs
- Dimensions: 3 pallets

### WARRANTY

---

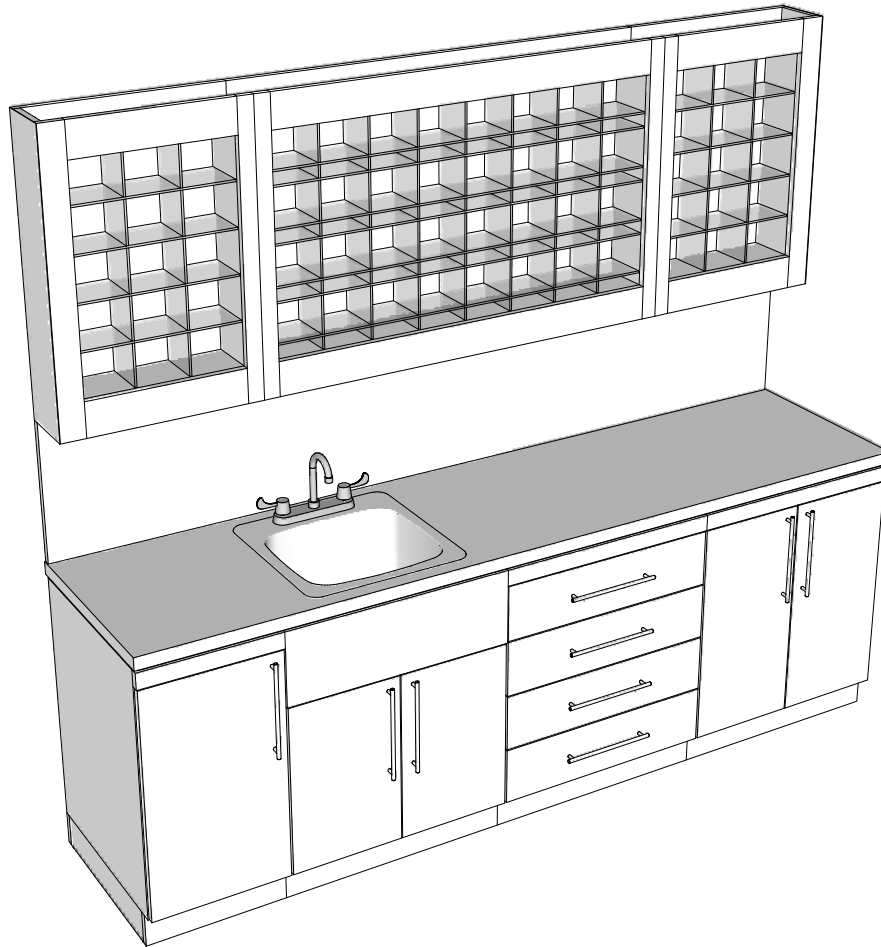
#### 3 Years:

- Ball-Bearing Drawer Slides
- Cabinet hinges

#### 1 Year:

- All remaining components, unless noted otherwise, are guaranteed for a period of one year from the date of purchase.






### Additional Information

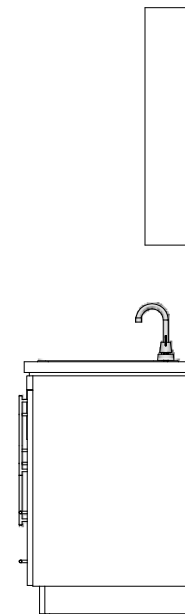
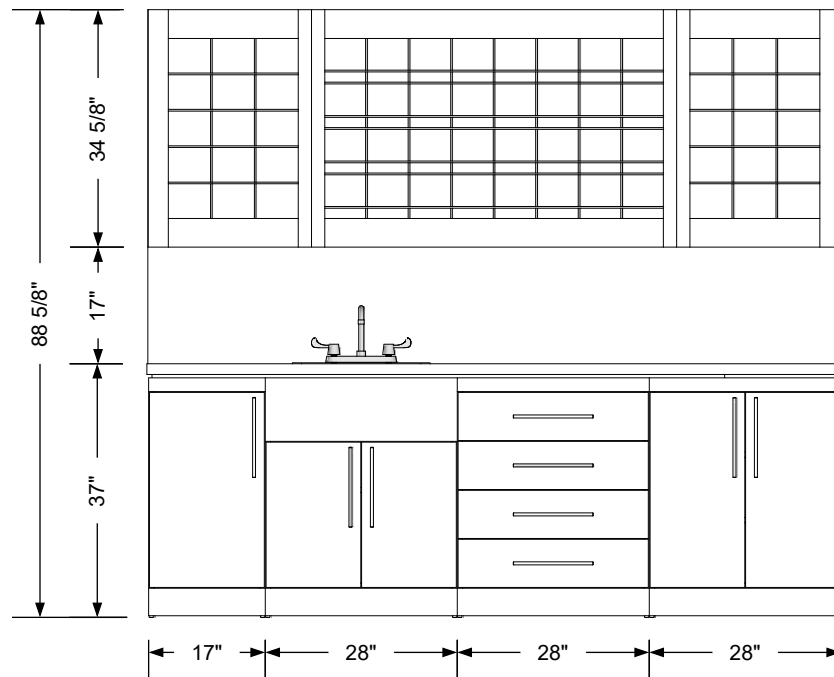
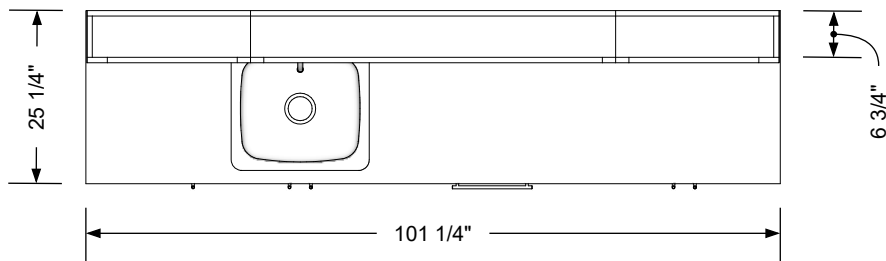
Assembly required - yes  
 Electrical required - yes  
 Plumbing required - yes  
 Wall blocking required - yes  
 COM yardage/laminate usage - 158 sf  
 4"h laminated plywood toe + 1/4"h glides  
 Other (specify) - n/a  
 Other (specify) - n/a

### Specification Drawing

This **Specification Drawing** is intended for communicating the basic description, function, appearance, dimensions, features, and installation of an item as manufactured by Collins Manufacturing Company. Because this drawing does not contain project specific information such as quantities, finishes, or options, it is not an approval drawing and does not require a signature. This drawing remains the property of Collins Manufacturing Company and must not be used against the interests of Collins Manufacturing Company.

### Product Information

		Collins Manufacturing 2000 Bowser Road Cookeville, TN 38506	
Name: Col-Pro Color Center			
Size: NTS	Part Number: 2241-101	Drawn By: Eng	
Prepared Date: 5/28/20	Revision Date: Date	Revision Number: Rev #	Sheet: 1 of 4




### Additional Information

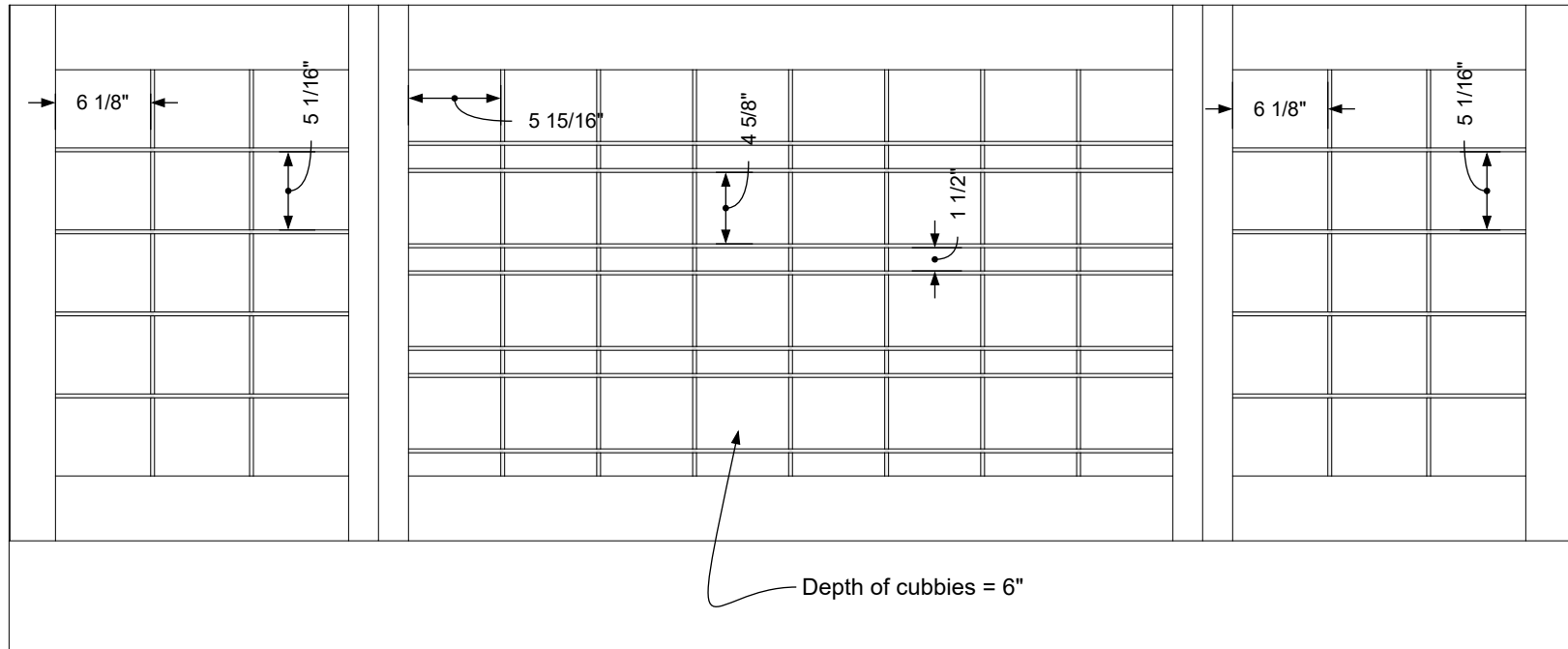
Assembly required - yes  
 Electrical required - yes  
 Plumbing required - yes  
 Wall blocking required - yes  
 COM yardage/laminate usage - 158 sf  
 4"h laminated plywood toe + 1/4"h glides  
 Other (specify) - n/a  
 Other (specify) - n/a

### Specification Drawing

This **Specification Drawing** is intended for communicating the basic description, function, appearance, dimensions, features, and installation of an item as manufactured by Collins Manufacturing Company. Because this drawing does not contain project specific information such as quantities, finishes, or options, it is not an approval drawing and does not require a signature. This drawing remains the property of Collins Manufacturing Company and must not be used against the interests of Collins Manufacturing Company.

### Product Information

 Collins Manufacturing 2000 Bowser Road Cookeville, TN 38506			
Name: Col-Pro Color Center			
Size: NTS	Part Number: 2241-101	Drawn By: Eng	
Prepared Date: 5/28/20	Revision Date: Date	Revision Number: Rev #	Sheet: 2 of 4



### Cubby details


#### Additional Information

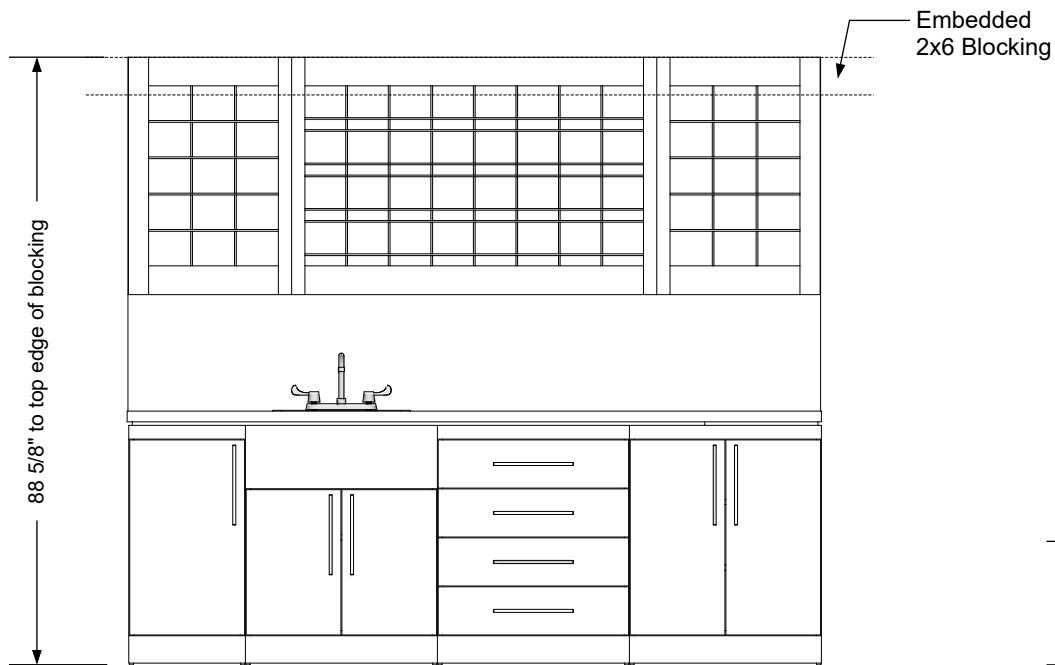
Assembly required - yes  
 Electrical required - yes  
 Plumbing required - yes  
 Wall blocking required - yes  
 COM yardage/laminate usage - 158 sf  
 4"h laminated plywood toe + 1/4"h glides  
 Other (specify) - n/a  
 Other (specify) - n/a

#### Specification Drawing

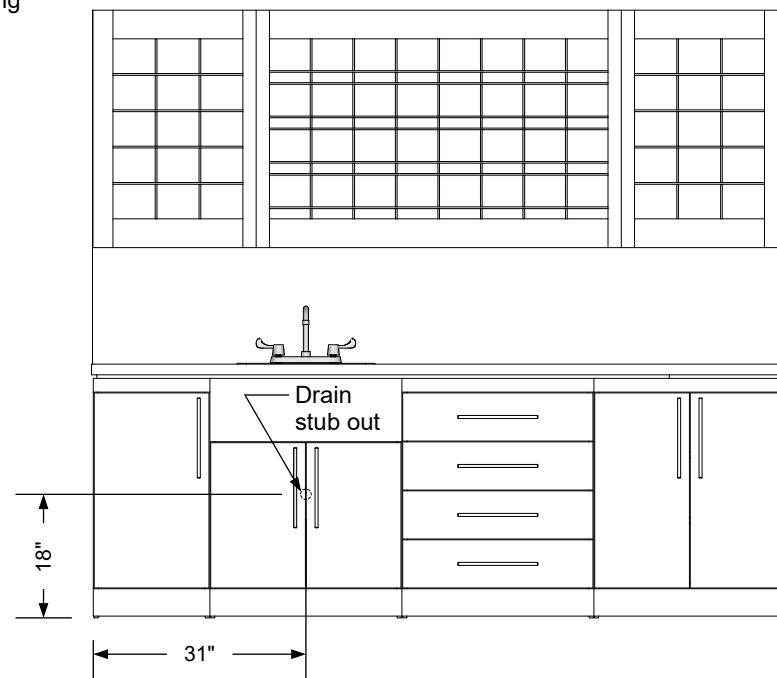
This **Specification Drawing** is intended for communicating the basic description, function, appearance, dimensions, features, and installation of an item as manufactured by Collins Manufacturing Company. Because this drawing does not contain project specific information such as quantities, finishes, or options, it is not an approval drawing and does not require a signature. This drawing remains the property of Collins Manufacturing Company and must not be used against the interests of Collins Manufacturing Company.

#### Product Information

		Collins Manufacturing 2000 Bowser Road Cookeville, TN 38506	
Name: Col-Pro Color Center			
Size: NTS	Part Number: 2241-101		Drawn By: Eng
Prepared Date: 5/28/20	Revision Date: Date	Revision Number: Rev #	Sheet: 3 of 4



**Blocking detail**



**Plumbing stub out detail**


### Additional Information

Assembly required - yes  
 Electrical required - yes  
 Plumbing required - yes  
 Wall blocking required - yes  
 COM yardage/laminate usage - 174 sf  
 4"h laminated plywood toe + 1/4"h glides  
 Other (specify) - n/a  
 Other (specify) - n/a

### Specification Drawing

This **Specification Drawing** is intended for communicating the basic description, function, appearance, dimensions, features, and installation of an item as manufactured by Collins Manufacturing Company. Because this drawing does not contain project specific information such as quantities, finishes, or options, it is not an approval drawing and does not require a signature. This drawing remains the property of Collins Manufacturing Company and must not be used against the interests of Collins Manufacturing Company.

### Product Information

		Collins Manufacturing 2000 Bowser Road Cookeville, TN 38506	
Name: Col-Pro Color Center			
Size: NTS	Part Number: 2241-101	Drawn By: Eng	
Prepared Date: 5/28/20	Revision Date: Date	Revision Number: Rev #	Sheet: 4 of 4