



VEECO COLOR BAR

SKU:2244-72

The Veeco Color Bar provides ample storage space.

TECHNICAL INFORMATION

- 72"W x 25"D x 36"H
- Asymmetrical design
- Color storage
- A stainless steel sink and counter top
- Lower and upper closed storage cabinetry
- Four large storage drawers

SHIPPING INFORMATION

Item generally ships via Freight(Truck) service

- Weight: 600 lbs
- Dimensions: 2 pallets

WARRANTY

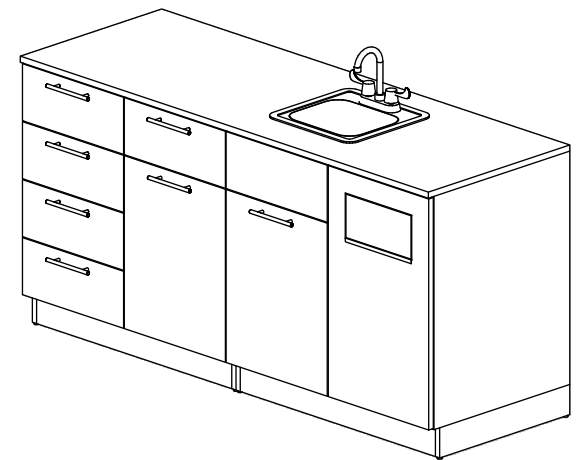
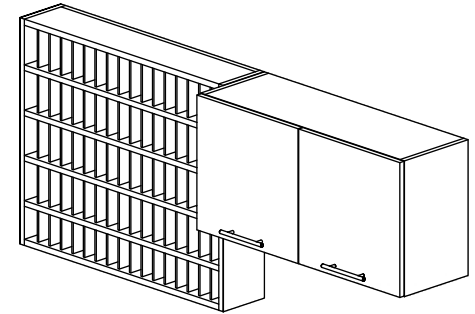
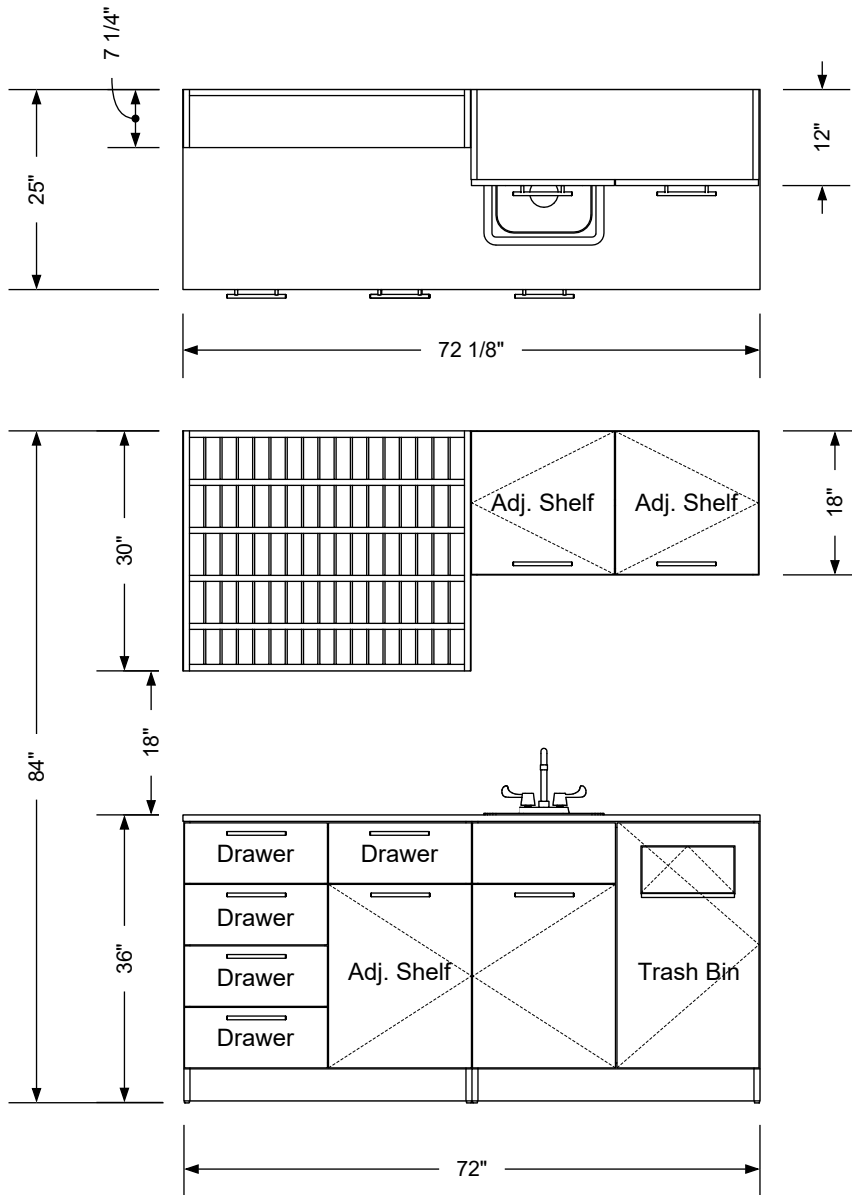
3 Years:

- Ball-Bearing Drawer Slides
- Cabinet hinges

1 Year:

- All remaining components, unless noted otherwise, are guaranteed for a period of one year from the date of purchase.






Additional Information

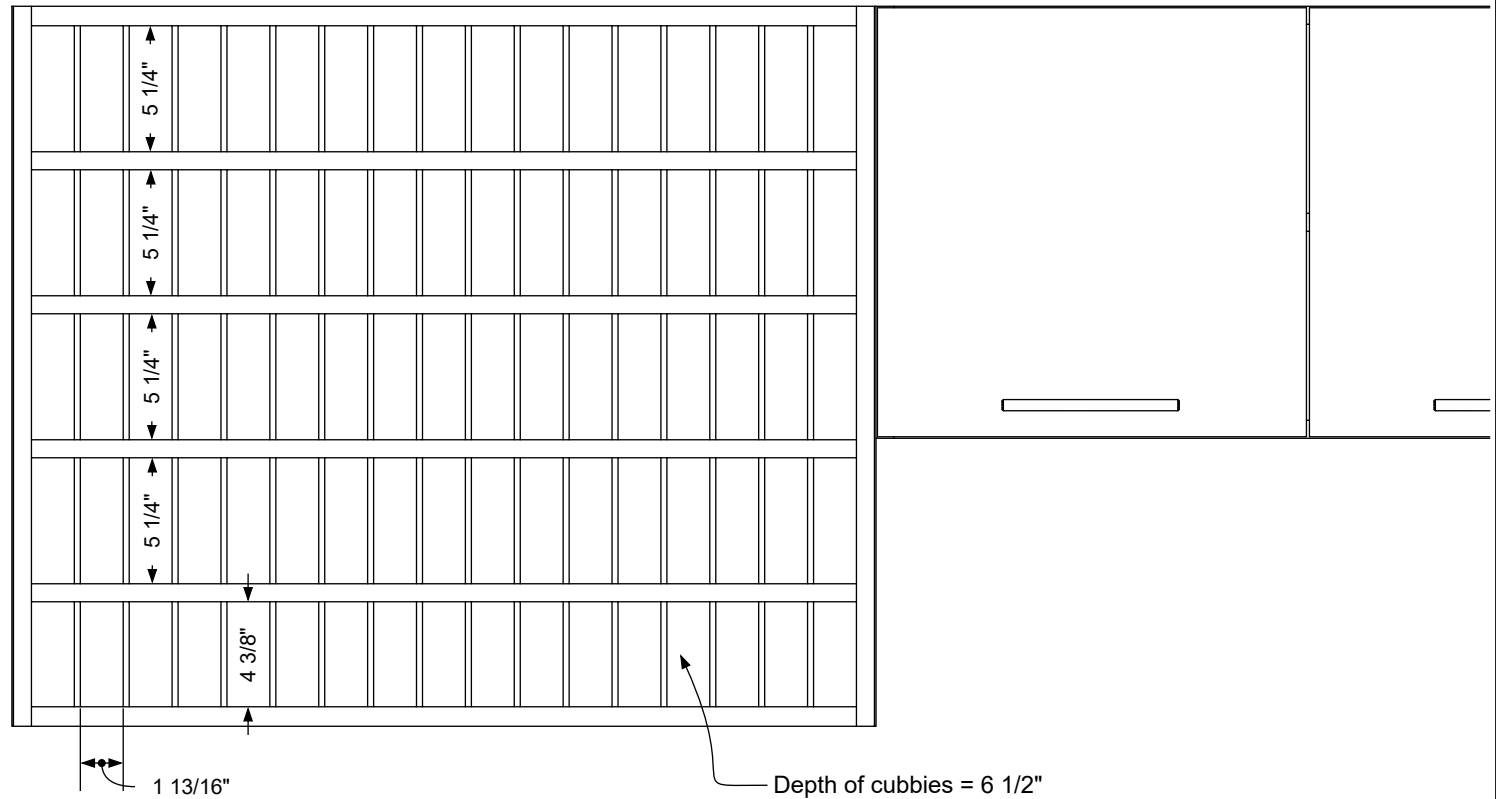
Assembly required - yes
 Electrical required - no
 Plumbing required - yes
 Wall blocking required - yes
 COM yardage/laminate usage - 98 sf
 4"h laminated plywood toe + 1/4"h glides
 Other (specify) - n/a
 Other (specify) - n/a

Specification Drawing

This **Specification Drawing** is intended for communicating the basic description, function, appearance, dimensions, features, and installation of an item as manufactured by Collins Manufacturing Company. Because this drawing does not contain project specific information such as quantities, finishes, or options, it is not an approval drawing and does not require a signature. This drawing remains the property of Collins Manufacturing Company and must not be used against the interests of Collins Manufacturing Company.

Product Information

 Collins Manufacturing 2000 Bowser Road Cookeville, TN 38506			
Name: Veeco Color Bar			
Size: NTS	Part Number: 2244-72	Drawn By: Eng	
Prepared Date: 7/6/20	Revision Date: Date	Revision Number: Rev #	Sheet: 1 of 3



Cubby details


Additional Information

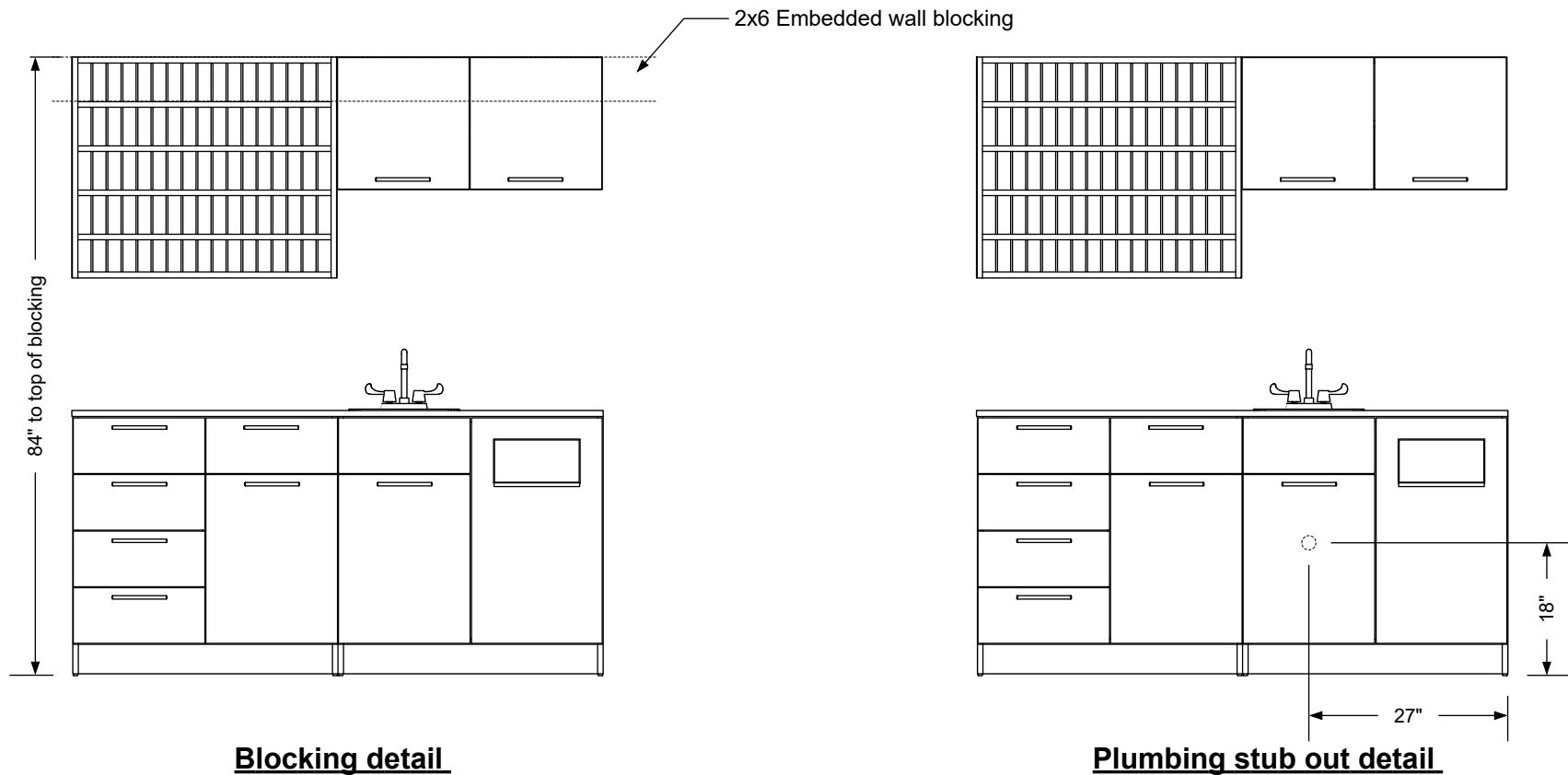
Assembly required - yes
 Electrical required - no
 Plumbing required - yes
 Wall blocking required - yes
 COM yardage/laminate usage - 98 sf
 4"h laminated plywood toe + 1/4"h glides
 Other (specify) - n/a
 Other (specify) - n/a

Specification Drawing

This **Specification Drawing** is intended for communicating the basic description, function, appearance, dimensions, features, and installation of an item as manufactured by Collins Manufacturing Company. Because this drawing does not contain project specific information such as quantities, finishes, or options, it is not an approval drawing and does not require a signature. This drawing remains the property of Collins Manufacturing Company and must not be used against the interests of Collins Manufacturing Company.

Product Information

 Collins Manufacturing 2000 Bowser Road Cookeville, TN 38506			
Name: Veeco Color Bar			
Size: NTS	Part Number: 2244-72	Drawn By: Eng	
Prepared Date: 7/6/20	Revision Date: Date	Revision Number: Rev #	Sheet: 2 of 3



Blocking detail

Plumbing stub out detail


Additional Information

Assembly required - yes
 Electrical required - no
 Plumbing required - yes
 Wall blocking required - yes
 COM yardage/laminate usage - 98 sf
 4"h laminated plywood toe + 1/4"h glides
 Other (specify) - n/a
 Other (specify) - n/a

Specification Drawing

This **Specification Drawing** is intended for communicating the basic description, function, appearance, dimensions, features, and installation of an item as manufactured by Collins Manufacturing Company. Because this drawing does not contain project specific information such as quantities, finishes, or options, it is not an approval drawing and does not require a signature. This drawing remains the property of Collins Manufacturing Company and must not be used against the interests of Collins Manufacturing Company.

Product Information

collins 		Collins Manufacturing 2000 Bowser Road Cookeville, TN 38506	
Name: Veeco Color Bar			
Size: NTS	Part Number: 2244-72		Drawn By: Eng
Prepared Date: 7/6/20	Revision Date: Date	Revision Number: Rev #	Sheet: 3 of 3