



## BREAKROOM CABINETRY

SKU:2684-96

The Breakroom Cabinetry perfect for a school setting.

### TECHNICAL INFORMATION

---

- 96"W x 25"D x 90"H
- Five drawers
- Eight cabinets
- Waste cabinet
- Open spot for microwave
- Double sided sink
- This is a basic example but can be customized to fit your space

### SHIPPING INFORMATION

---

Item generally ships via Freight(Truck) service

- Weight: 715 lbs
- Dimensions: 3 pallets

### WARRANTY

---

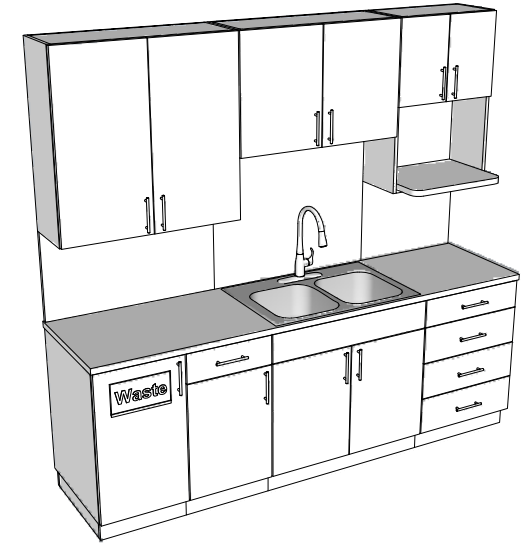
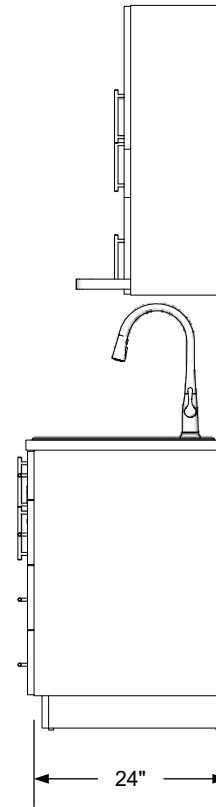
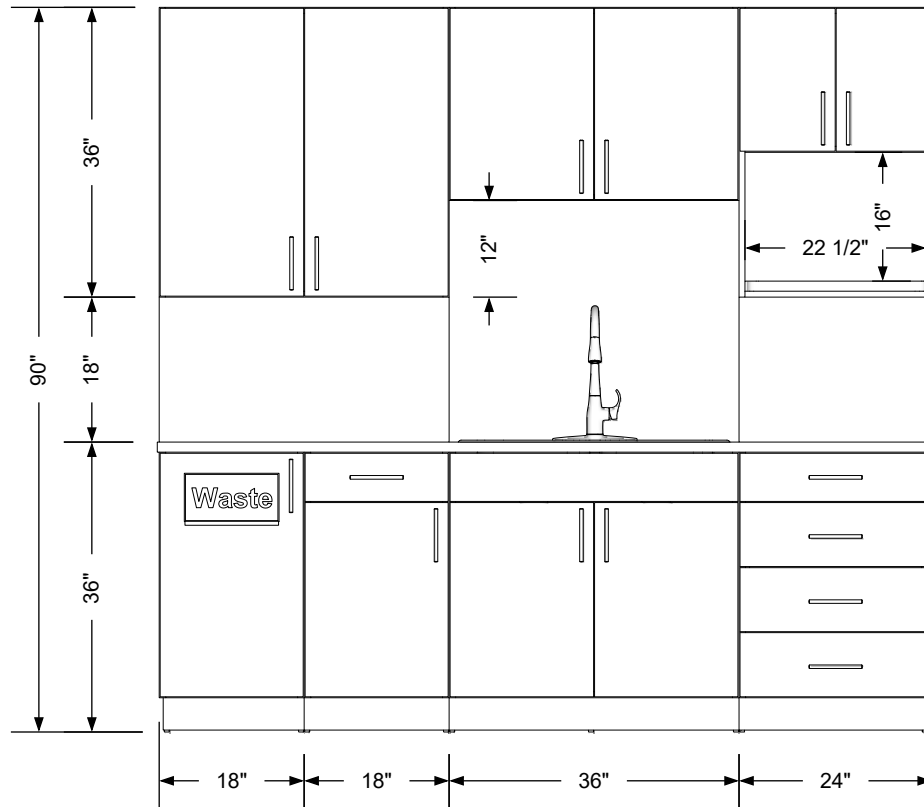
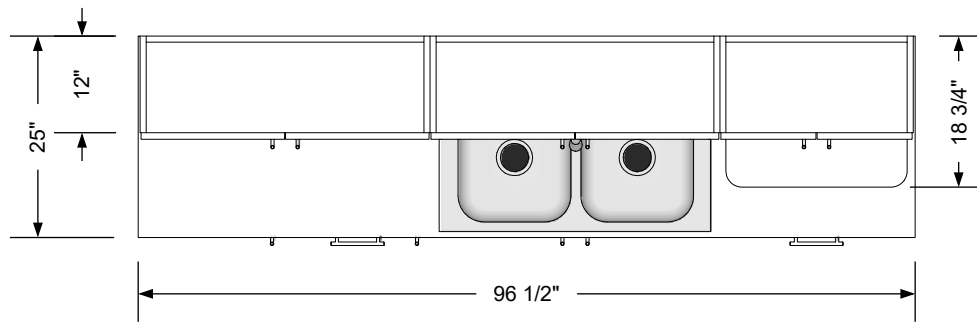
#### 3 Years:

- Ball-Bearing Drawer Slides
- Cabinet hinges

#### 1 Year:

- All remaining components, unless noted otherwise, are guaranteed for a period of one year from the date of purchase.






## Additional Information

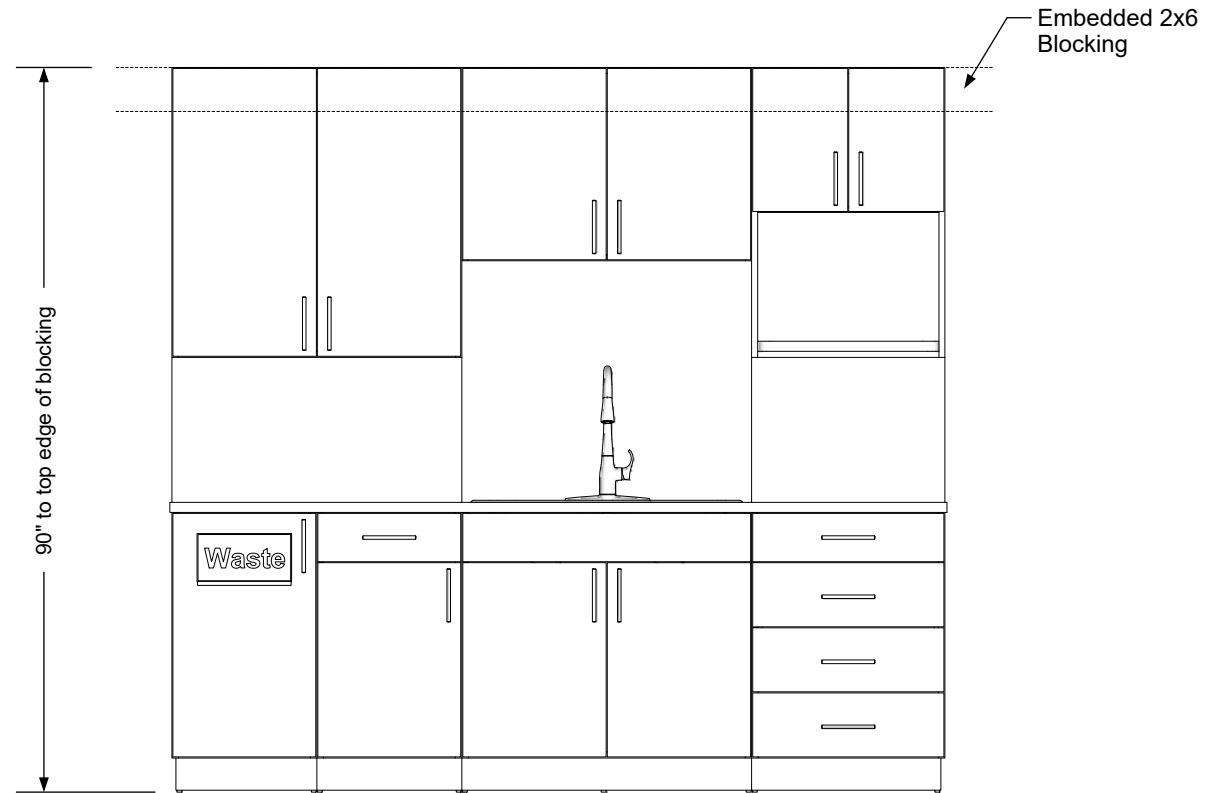
Assembly required - yes  
 Electrical required - yes  
 Plumbing required - yes  
 Wall blocking required - yes  
 COM yardage/laminate usage - 178 sf  
 4" h laminated plywood toe + 1/4" h glides  
 Other (specify) - n/a  
 Other (specify) - n/a

## Specification Drawing

This **Specification Drawing** is intended for communicating the basic description, function, appearance, dimensions, features, and installation of an item as manufactured by Collins Manufacturing Company. Because this drawing does not contain project specific information such as quantities, finishes, or options, it is not an approval drawing and does not require a signature. This drawing remains the property of Collins Manufacturing Company and must not be used against the interests of Collins Manufacturing Company.

## Product Information

		Collins Manufacturing 2000 Bowser Road Cookeville, TN 38506	
Name: Breakroom Cabinetry			
Size: NTS	Part Number: 2684-96		Drawn By: Eng
Prepared Date: 7/7/20	Revision Date: Date	Revision Number: Rev #	Sheet: 1 of 3



### Wall blocking detail


#### Additional Information

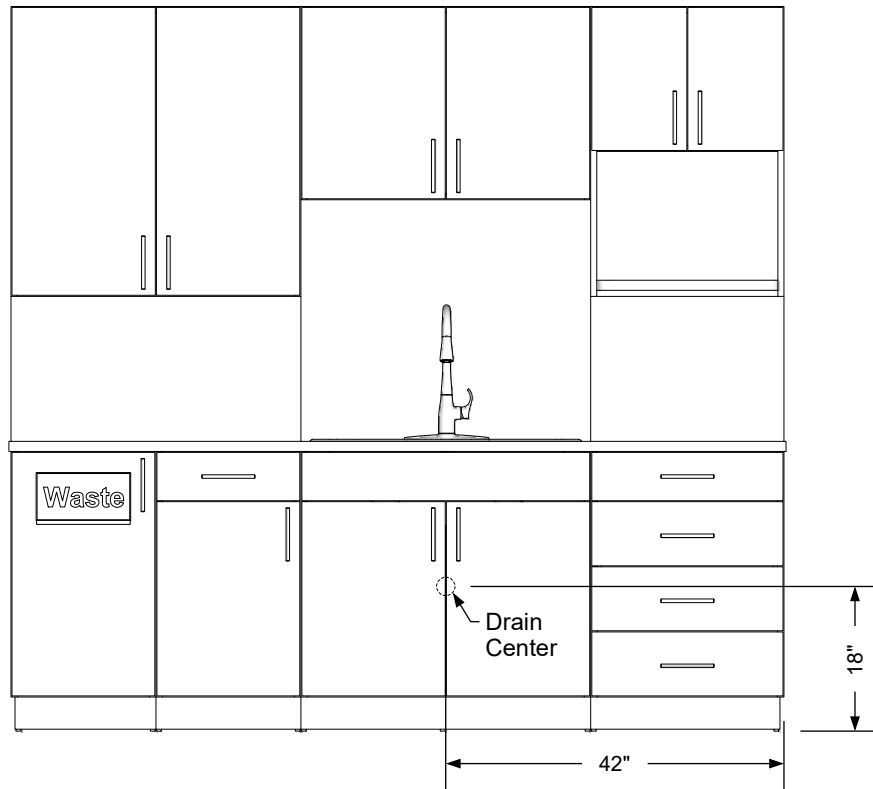
Assembly required - yes  
 Electrical required - yes  
 Plumbing required - yes  
 Wall blocking required - yes  
 COM yardage/laminate usage - 178 sf  
 4"h laminated plywood toe + 1/4"h glides  
 Other (specify) - n/a  
 Other (specify) - n/a

#### Specification Drawing

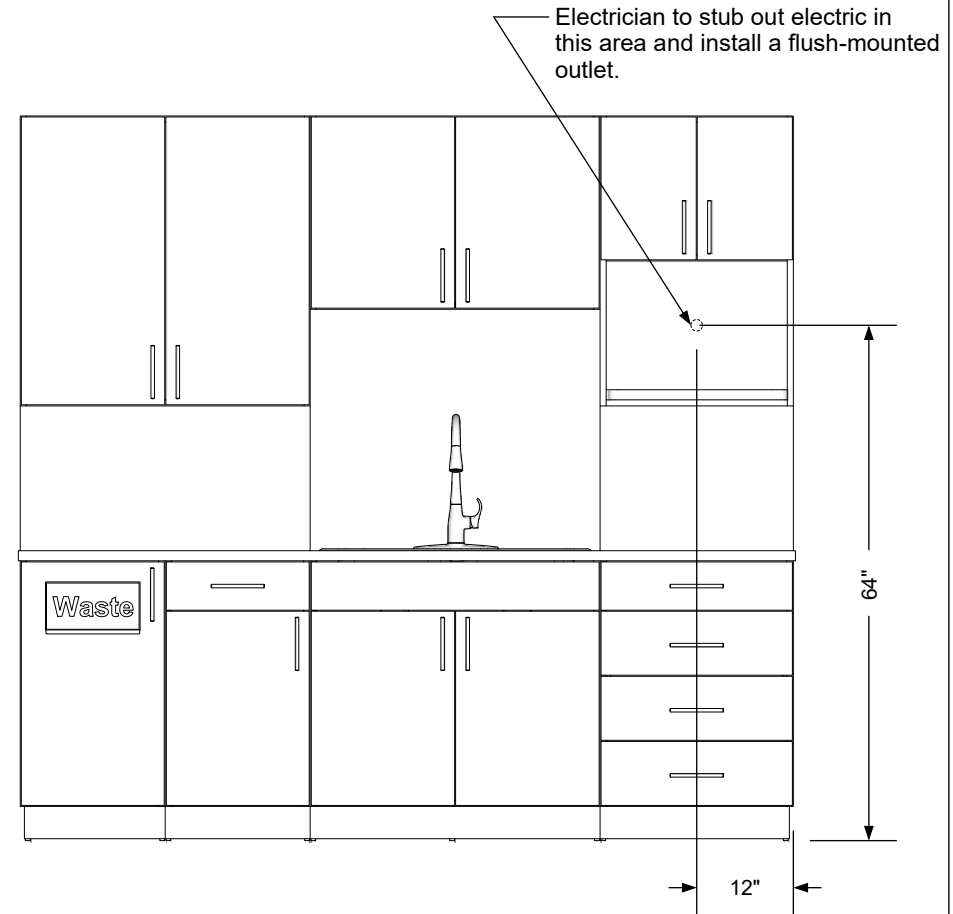
This **Specification Drawing** is intended for communicating the basic description, function, appearance, dimensions, features, and installation of an item as manufactured by Collins Manufacturing Company. Because this drawing does not contain project specific information such as quantities, finishes, or options, it is not an approval drawing and does not require a signature. This drawing remains the property of Collins Manufacturing Company and must not be used against the interests of Collins Manufacturing Company.

#### Product Information

		Collins Manufacturing 2000 Bowser Road Cookeville, TN 38506	
Name: Breakroom Cabinetry			
Size: NTS	Part Number: 2684-96		Drawn By: Eng
Prepared Date: 7/7/20	Revision Date: Date	Revision Number: Rev #	Sheet: 2 of 3



**Plumbing stub out detail**



**Electrical stub out detail**

### Additional Information

Assembly required - yes  
 Electrical required - yes  
 Plumbing required - yes  
 Wall blocking required - yes  
 COM yardage/laminate usage - 178 sf  
 4"h laminated plywood toe + 1/4"h glides  
 Other (specify) - n/a  
 Other (specify) - n/a

### Specification Drawing

This **Specification Drawing** is intended for communicating the basic description, function, appearance, dimensions, features, and installation of an item as manufactured by Collins Manufacturing Company. Because this drawing does not contain project specific information such as quantities, finishes, or options, it is not an approval drawing and does not require a signature. This drawing remains the property of Collins Manufacturing Company and must not be used against the interests of Collins Manufacturing Company.

### Product Information

<b>collins</b> Collins Manufacturing 2000 Bowser Road Cookeville, TN 38506			
Name: Breakroom Cabinetry			
Size: NTS	Part Number: 2684-96	Drawn By: Eng	
Prepared Date: 7/7/20	Revision Date: Date	Revision Number: Rev #	Sheet: 3 of 3