



## NIRVANA COMFORT WASH

SKU:2880



Help your client find the state of perfect happiness with Collins new Nirvana Lay-In Style Comfort Wash! All-Electric Shampoo System with motorized leg rest and motorized front to back adjustability. Collins comfort wash series are the only shampoo systems in the market that provide a motorized leg rest that travels with the seat when adjusting for your clients height. The Nirvana features Collins CB79 lay-in shampoo bowl with headrest pad built into the center of the shampoo bowl providing for the ultimate client comfort during a shampoo service.

Specify shampoo bowl color, laminated chassis color, and upholstery color when ordering. Solid surface top available in Arctic White only.

### TECHNICAL INFORMATION

- Width between the arms 22 1/2"
- Width outside the arms 30"
- Height to the top of the back 29"
- Height to top of seat 22"
- Depth of seat 19"
- Overall depth 56"
- Overall depth w/ footrest & chair completely extended 81"
- UPC listed Shampoo bowl and components
- 2Amps - Power requirement that plugs into standard 120V receptacle

### SHIPPING INFORMATION

This item ships via LTL service with a lift gate. 36"W x 60"D x 48"H

### WARRANTY

#### 3 Year:

- Molded urethane arms
- Cabinet drawer-slides

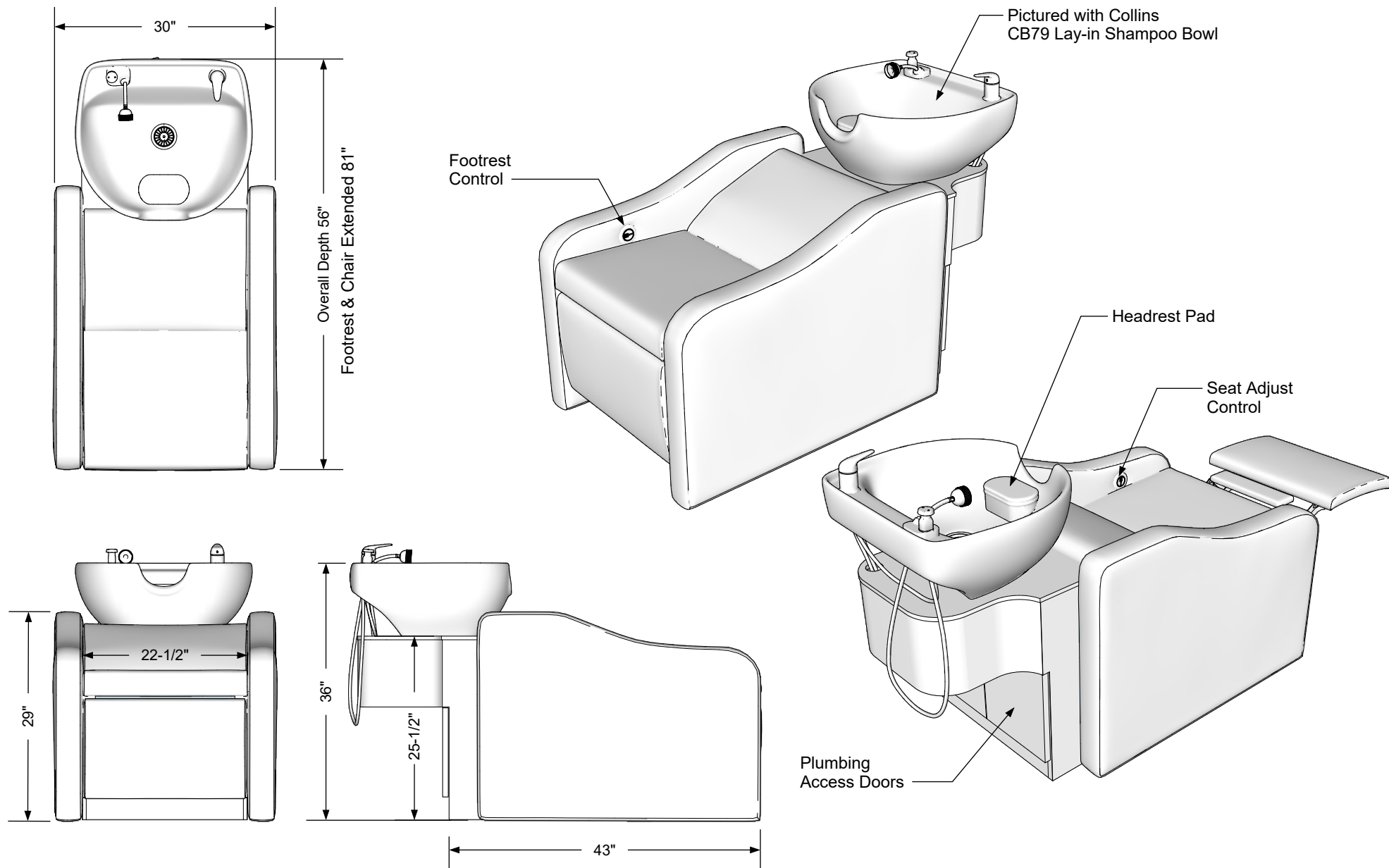
#### 2 Year:

- All Shampoo Bowls
- Vacuum breakers

#### 1 Year:

- All remaining components, unless noted otherwise





### Additional Information

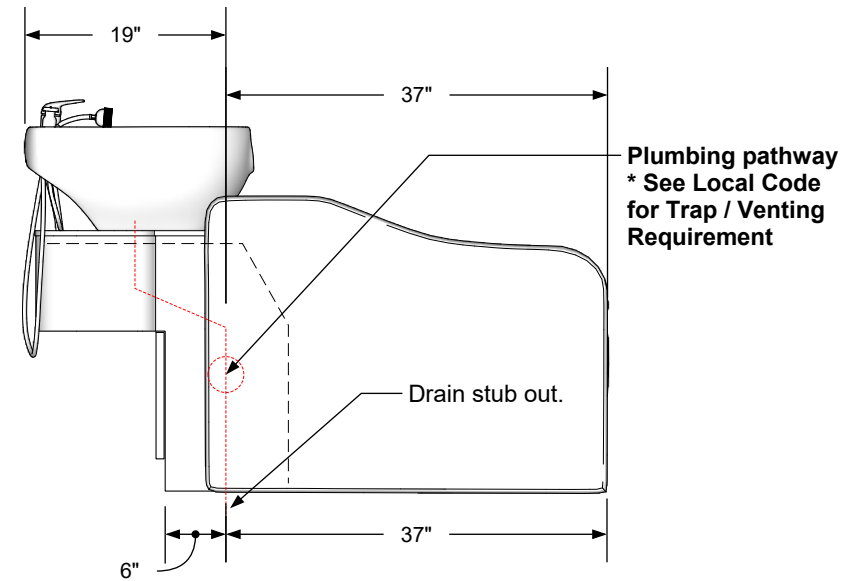
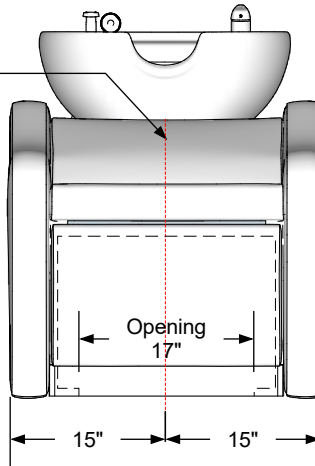
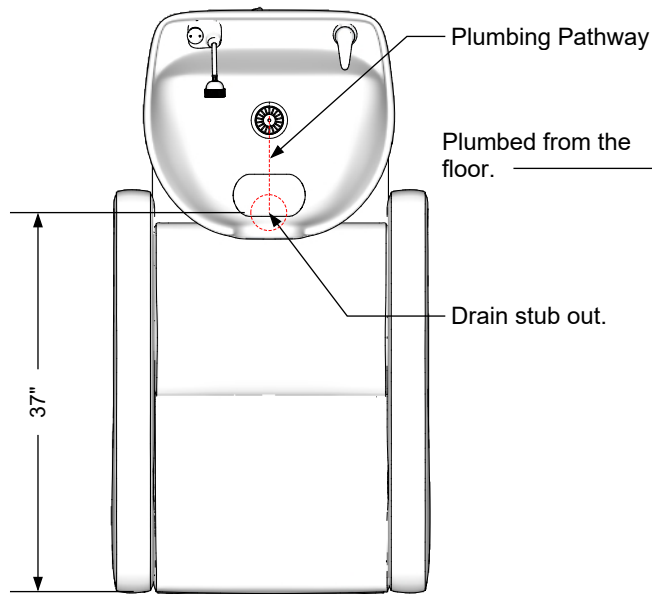
Assembly required - yes  
 Electrical required - yes  
 Plumbing required - yes  
 Wall blocking required - no  
 Other (specify) - n/a  
 Other (specify) - n/a  
 Other (specify) - n/a  
 Other (specify) - n/a

### Specification Drawing

This **Specification Drawing** is intended for communicating the basic description, function, appearance, dimensions, features, and installation of an item as manufactured by Collins Manufacturing Company. Because this drawing does not contain project specific information such as quantities, finishes, or options, it is not an approval drawing and does not require a signature. This drawing remains the property of Collins Manufacturing Company and must not be used against the interests of Collins Manufacturing Company.

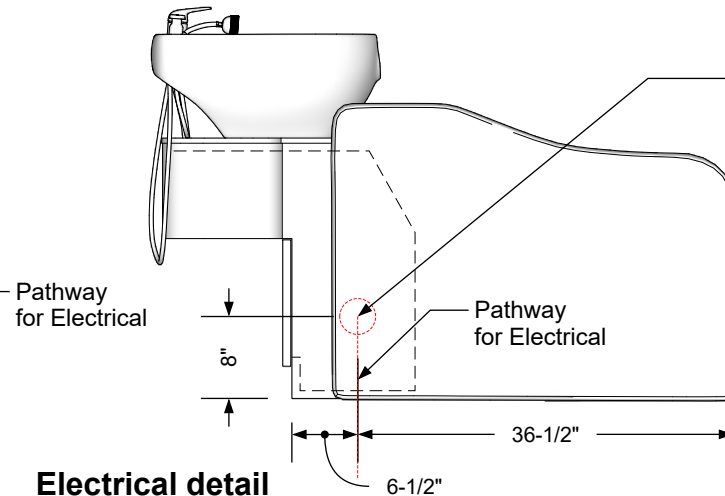
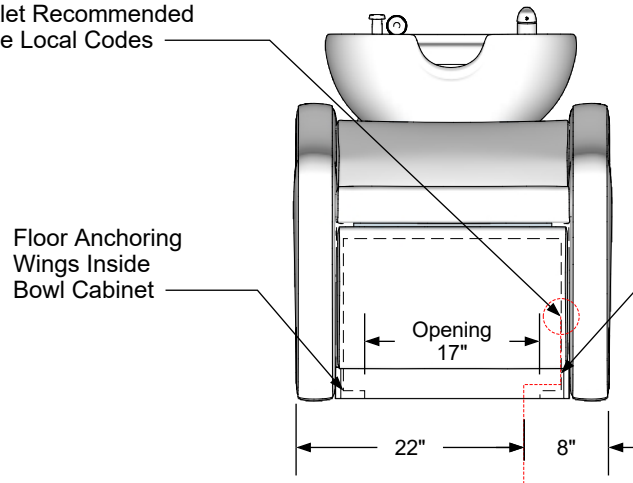
### Product Information

|  |                        |                        |               |
|--|------------------------|------------------------|---------------|
| <b>collins</b> Collins Manufacturing<br>2000 Bowser Road<br>Cookeville, TN 38506 |                        |                        |               |
| Name: Nirvana Comfort Wash   |                        |                        |               |
| Size: NTS  | Part Number: 2880      | Drawn By: Eng          |               |
| Prepared Date: 2/15/21   | Revision Date: 2/18/21 | Revision Number: Rev 1 | Sheet: 1 of 3 |



### Plumbing stub out detail \*Please Consult Local Codes

GFI Surface Mounted  
Outlet Recommended  
\*See Local Codes



**Integrated Transformer Plug**  
Input 100V~240V  
Output 29V 2A  
8 Foot Long  
Included with Shampoo Unit.

**\*Electrician is responsible to determine connection for power**

### Electrical detail \*Please Consult Local Codes


#### Additional Information

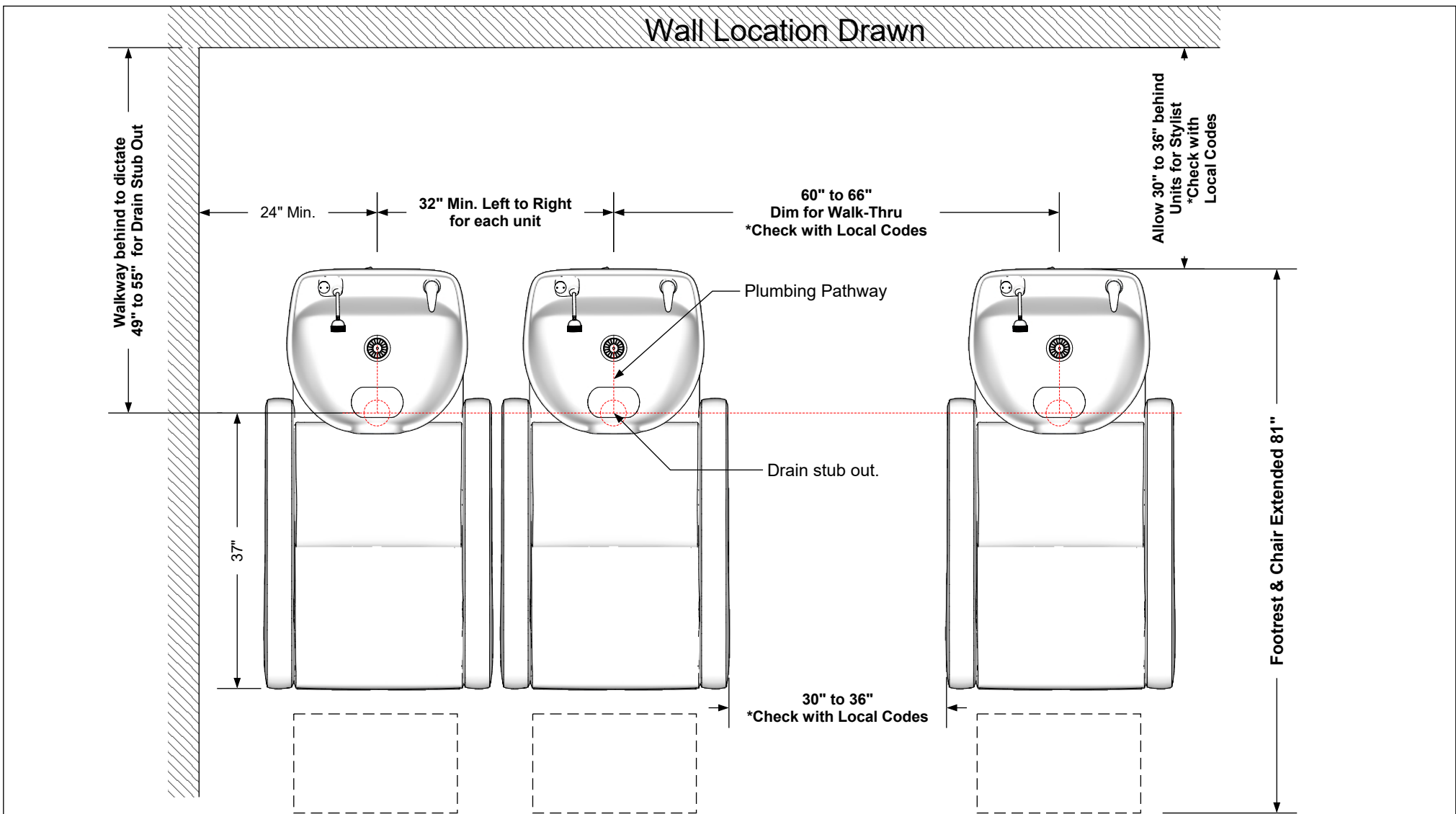
Assembly required - yes  
Electrical required - yes  
Plumbing required - yes  
Wall blocking required - no  
Other (specify) - n/a  
Other (specify) - n/a  
Other (specify) - n/a  
Other (specify) - n/a

#### Specification Drawing

This **Specification Drawing** is intended for communicating the basic description, function, appearance, dimensions, features, and installation of an item as manufactured by Collins Manufacturing Company. Because this drawing does not contain project specific information such as quantities, finishes, or options, it is not an approval drawing and does not require a signature. This drawing remains the property of Collins Manufacturing Company and must not be used against the interests of Collins Manufacturing Company.

#### Product Information

|   |                           |   |                  |
|---|---------------------------|---|------------------|
|  |                           | Collins Manufacturing<br>2000 Bowser Road<br>Cookeville, TN 38506 |                  |
| Name: Nirvana Comfort Wash  |                           |   |                  |
| Size:<br>NTS  | Part Number:<br>2880      |   | Drawn By:<br>Eng |
| Prepared Date:<br>2/15/21   | Revision Date:<br>2/18/21 | Revision Number:<br>Rev 1   | Sheet:<br>2 of 3 |



**Multi Unit Recommended Spacing Configuration**  
**\*Please Consult Local Codes**


#### Additional Information

Assembly required - yes  
 Electrical required - yes  
 Plumbing required - yes  
 Wall blocking required - no  
 Other (specify) - n/a  
 Other (specify) - n/a  
 Other (specify) - n/a  
 Other (specify) - n/a

#### Specification Drawing

This **Specification Drawing** is intended for communicating the basic description, function, appearance, dimensions, features, and installation of an item as manufactured by Collins Manufacturing Company. Because this drawing does not contain project specific information such as quantities, finishes, or options, it is not an approval drawing and does not require a signature. This drawing remains the property of Collins Manufacturing Company and must not be used against the interests of Collins Manufacturing Company.

#### Product Information

|  |                                  |   |                         |
|--|----------------------------------|---|-------------------------|
| <b>collins</b>  |                                  | Collins Manufacturing<br>2000 Bowser Road<br>Cookeville, TN 38506 |                         |
| Name: <b>Nirvana Comfort Wash</b>  |                                  |   |                         |
| Size:<br><b>NTS</b>  | Part Number:<br><b>2880</b>      |   | Drawn By:<br><b>Eng</b> |
| Prepared Date:<br><b>2/15/21</b>   | Revision Date:<br><b>2/18/21</b> | Revision Number:<br><b>Rev 1</b>                                  | Sheet:<br><b>3 of 3</b> |