



## CLASSIC 42 BULKHEAD

SKU:2202-42



This Classic Bulkhead is a salon essential and comes equipped with a bulkhead surface for mounting a shampoo bowl. Featuring upper cabinet with sliding doors for clean towel storage, and a lower cabinet with a tilt-out soiled towel bin and molded bottle well. This station also features a full backsplash, and comes in a variety of laminate colors.

### TECHNICAL INFORMATION

- 42"W x 12"D x 72"H
- Full width laminated shampoo well
- Upper towel cabinet w/ sliding doors
- Tip-out soiled towel hamper
- Pictured CB19 bowl is ordered separately
- also available in 45" and 48" versions

### SHIPPING INFORMATION

Item generally ships via Freight(Truck) service

- Weight: 265 lbs
- Dimensions: 54"L x 32"W x 48"H

### WARRANTY

#### 3 Year:

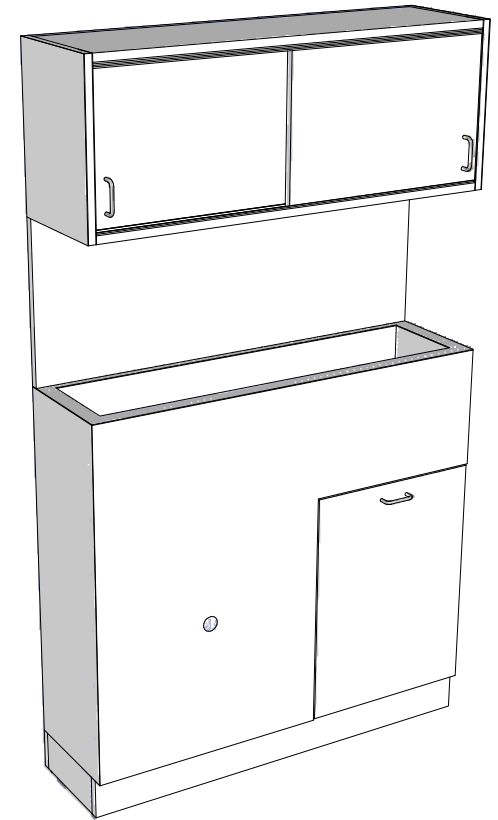
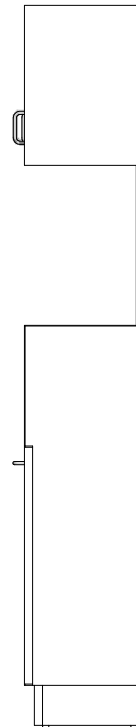
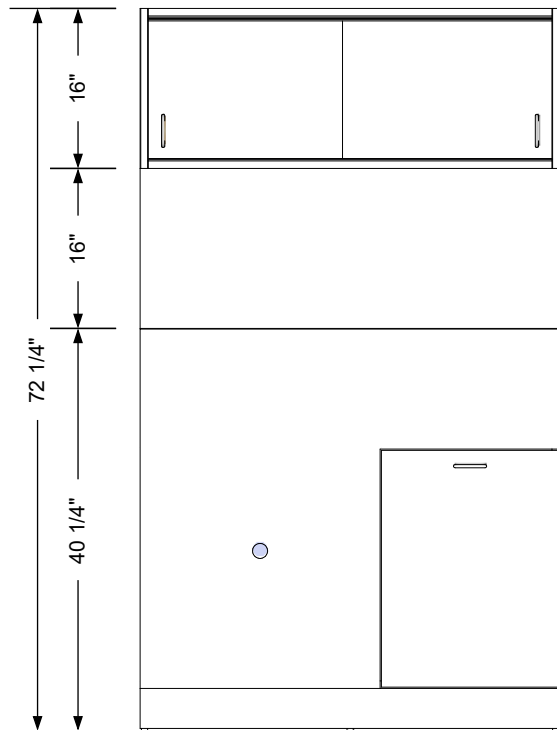
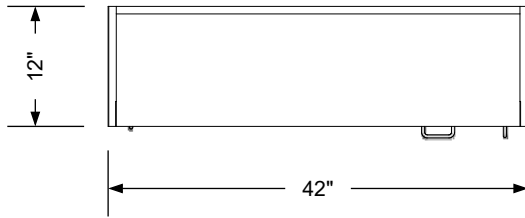
- Molded urethane arms
- Cabinet drawer-slides

#### 2 Year:

- All Shampoo Bowls
- Vacuum breakers

#### 1 Year:

- All remaining components, unless noted otherwise




## Additional Information

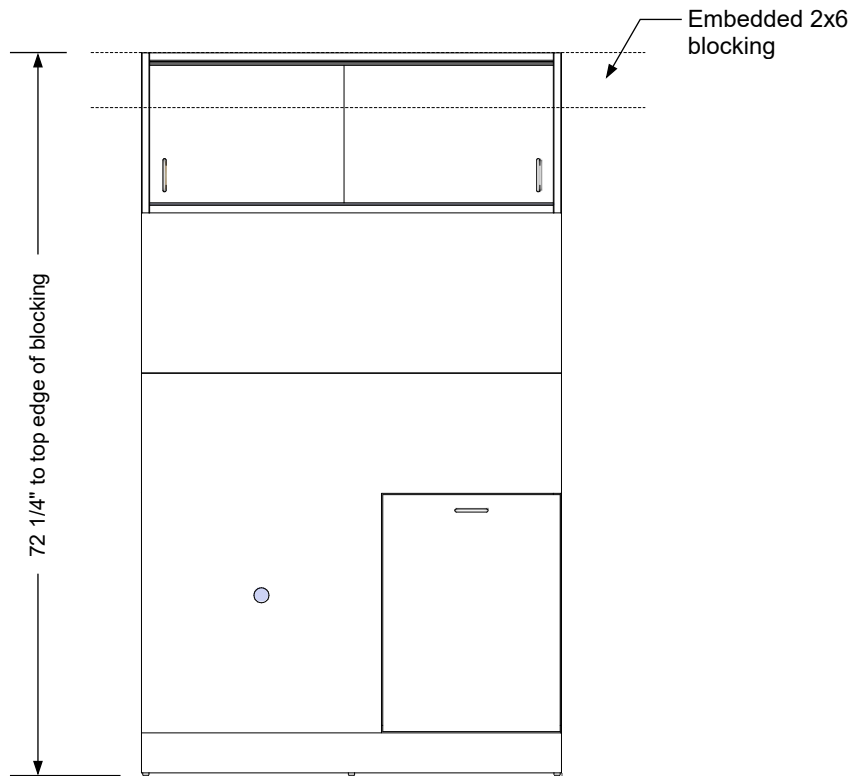
Assembly required - yes  
 Electrical required - no  
 Plumbing required - yes  
 Wall blocking required - yes  
 COM yardage/laminate usage - 69 sf  
 4"h laminated plywood toe + 1/4"h glides  
 Other (specify) - n/a  
 Other (specify) - n/a

## Specification Drawing

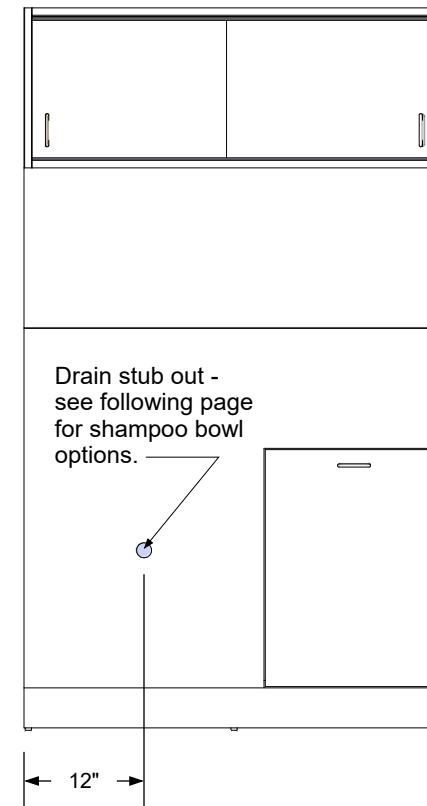
This **Specification Drawing** is intended for communicating the basic description, function, appearance, dimensions, features, and installation of an item as manufactured by Collins Manufacturing Company. Because this drawing does not contain project specific information such as quantities, finishes, or options, it is not an approval drawing and does not require a signature. This drawing remains the property of Collins Manufacturing Company and must not be used against the interests of Collins Manufacturing Company.

## Product Information

		Collins Manufacturing 2000 Bowser Road Cookeville, TN 38506	
Name: Classic 42 Bulkhead			
Size: NTS	Part Number: 2202-42		Drawn By: Eng
Prepared Date: 5/14/20	Revision Date: Date	Revision Number: Rev #	Sheet: 1 of 3



**Wall blocking detail**



**Plumbing stub out detail**


### Additional Information

Assembly required - yes  
 Electrical required - no  
 Plumbing required - yes  
 Wall blocking required - yes  
 COM yardage/laminate usage - 69 sf  
 4"h laminated plywood toe + 1/4"h glides  
 Other (specify) - n/a  
 Other (specify) - n/a

### Specification Drawing

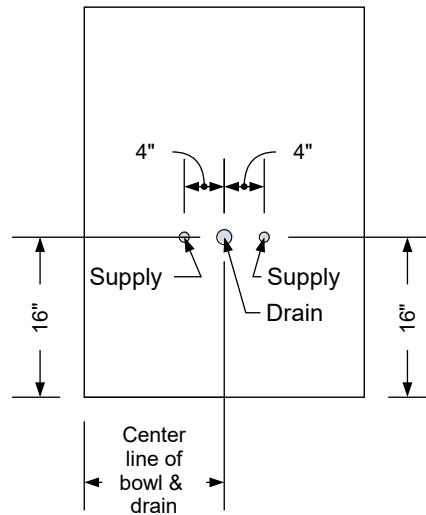
This **Specification Drawing** is intended for communicating the basic description, function, appearance, dimensions, features, and installation of an item as manufactured by Collins Manufacturing Company. Because this drawing does not contain project specific information such as quantities, finishes, or options, it is not an approval drawing and does not require a signature. This drawing remains the property of Collins Manufacturing Company and must not be used against the interests of Collins Manufacturing Company.

### Product Information

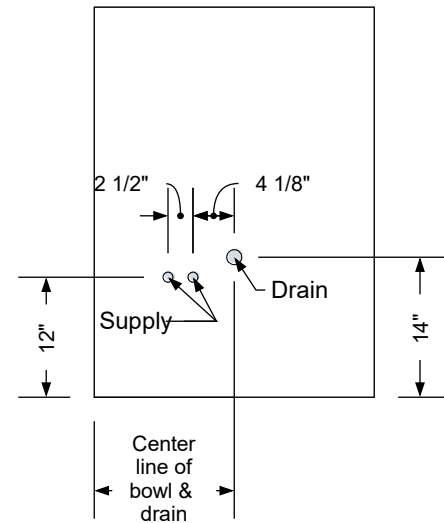
		Collins Manufacturing 2000 Bowser Road Cookeville, TN 38506	
Name: Classic 42 Bulkhead			
Size: NTS	Part Number: 2202-42		Drawn By: Eng
Prepared Date: 5/14/20	Revision Date: Date	Revision Number: Rev #	Sheet: 2 of 3



**Standard Shampoo Bowl**



**T100 w/ Tilting Shampoo Bowl**



**K100 Adjust-A-Sink Shampoo Bowl**

### **Typical Collins Shampoo Bowl Options**


#### **Additional Information**

Assembly required - yes  
 Electrical required - no  
 Plumbing required - yes  
 Wall blocking required - yes  
 COM yardage/laminate usage - 69 sf  
 4"h laminated plywood toe + 1/4"h glides  
 Other (specify) - n/a  
 Other (specify) - n/a

#### **Specification Drawing**

This **Specification Drawing** is intended for communicating the basic description, function, appearance, dimensions, features, and installation of an item as manufactured by Collins Manufacturing Company. Because this drawing does not contain project specific information such as quantities, finishes, or options, it is not an approval drawing and does not require a signature. This drawing remains the property of Collins Manufacturing Company and must not be used against the interests of Collins Manufacturing Company.

#### **Product Information**

 Collins Manufacturing 2000 Bowser Road Cookeville, TN 38506			
Name: Classic 42 Bulkhead			
Size: NTS	Part Number: 2202-42	Drawn By: Eng	
Prepared Date: 5/14/20	Revision Date: Date	Revision Number: Rev #	Sheet: 3 of 3