



## THEORY MANNEQUIN STATION W/ STORAGE

SKU:2453-36

This Mannequin Station is a perfect addition to any salon school. The clamps hold your mannequins in place at an ergonomic height while you work, and the locking storage cabinets will keep your tools safe and accessible.

\*3 single units shown side-by-side

*Mirror sold separately.*

### TECHNICAL INFORMATION

- 36"W x 19"D x 34"H + 6" splash
- Radius corners on work ledge
- Continuous combination backsplash and electrical chase
- Fourplex outlets
- 270/degree door hinges
- Adjustable shelves
- Hasp lock mechanism
- Mannequin clamp support

### SHIPPING INFORMATION

Item generally ships via Freight(Truck) service

- Weight: 250 lbs
- Dimensions: 48"L x 32"W x 46"H

### WARRANTY

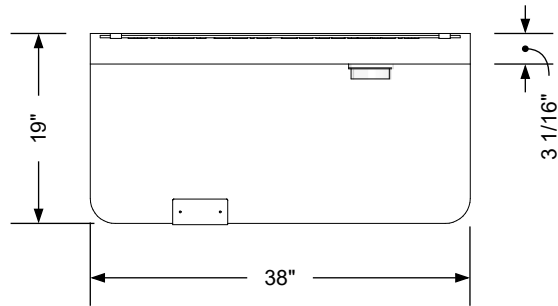
#### 3 Years:

- Ball-Bearing Drawer Slides
- Cabinet hinges

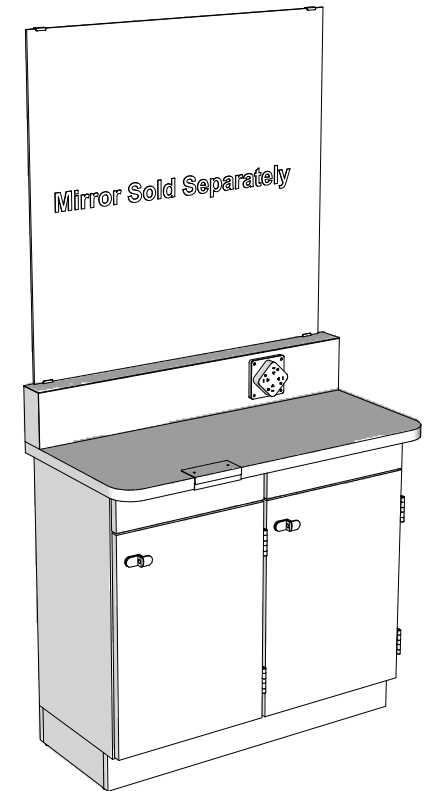
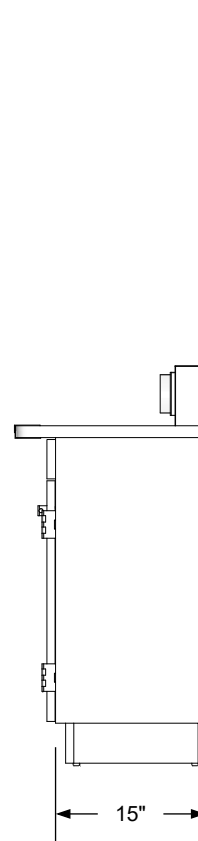
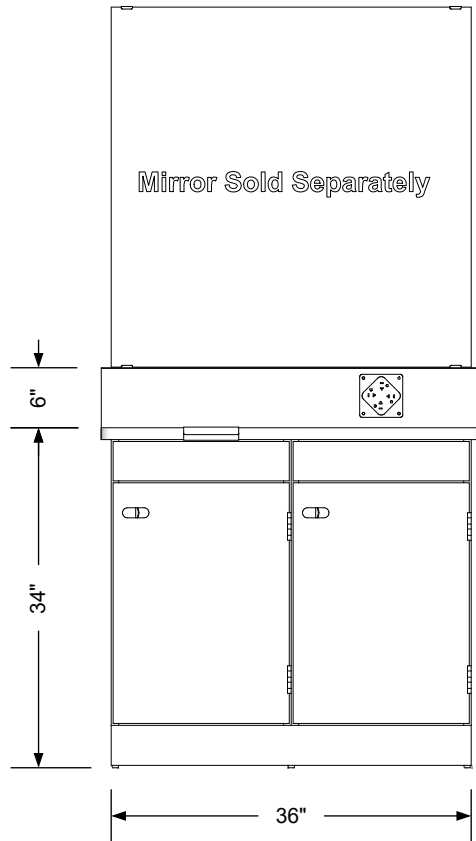
#### 1 Year:

- All remaining components, unless noted otherwise, are guaranteed for a period of one year from the date of purchase.





Note:  
Multiple units may be jointed end to end to create longer, linear arrangements. In those situations, the countertops are made into longer sections to eliminate seams. The student spacing will remain unchanged.



### Additional Information

Assembly required - yes  
Electrical required - yes  
Plumbing required - no  
Wall blocking required - no  
COM yardage/laminate usage - 38 sf  
4"h laminated plywood toe + 1/4"h glides  
Other (specify) - n/a  
Other (specify) - n/a

### Specification Drawing

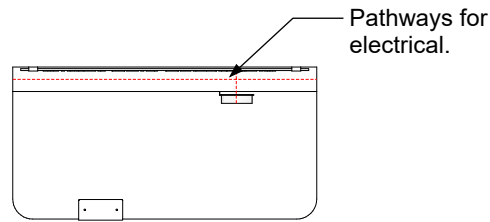
This **Specification Drawing** is intended for communicating the basic description, function, appearance, dimensions, features, and installation of an item as manufactured by Collins Manufacturing Company. Because this drawing does not contain project specific information such as quantities, finishes, or options, it is not an approval drawing and does not require a signature. This drawing remains the property of Collins Manufacturing Company and must not be used against the interests of Collins Manufacturing Company.

### Product Information

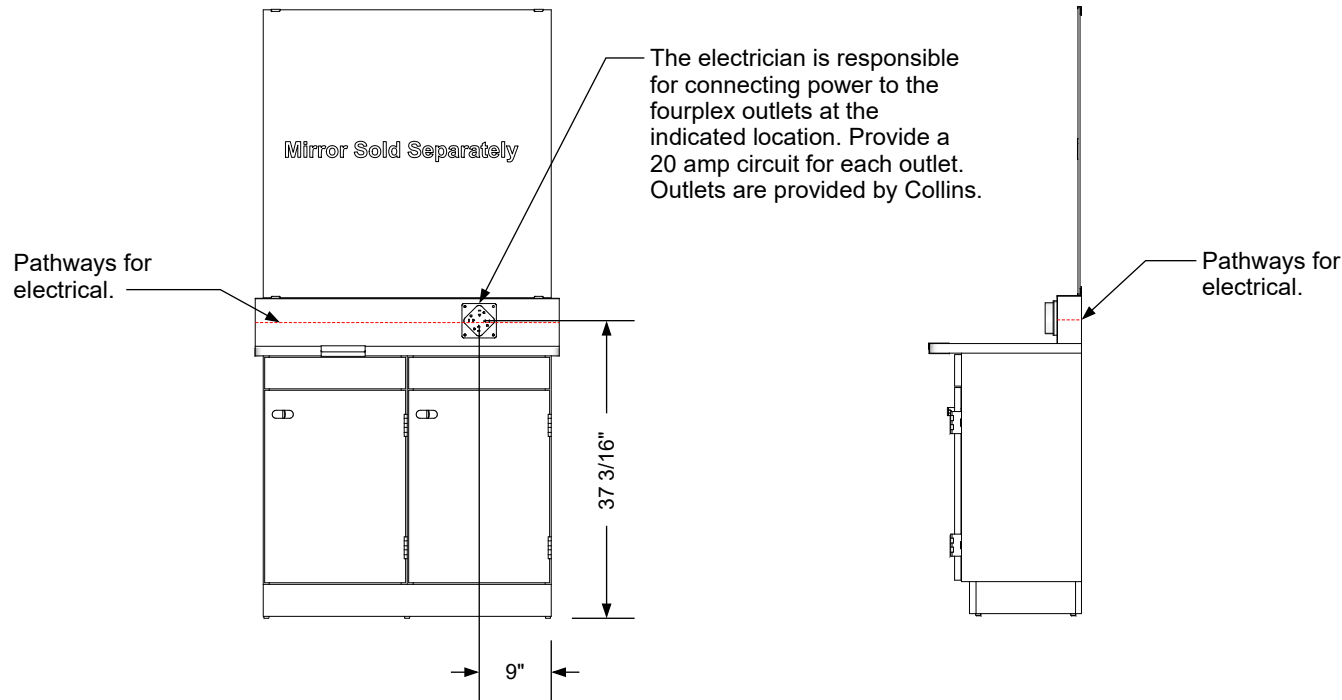


Collins Manufacturing  
2000 Bowser Road  
Cookeville, TN 38506

Name: Theory Mannequin Station w/ Storage			
Size: NTS	Part Number: 2453-36	Drawn By: Eng	
Prepared Date: 6/9/20	Revision Date: Date	Revision Number: Rev #	Sheet: 1 of 2



**Note:**  
Multiple units may be jointed end to end to create longer, linear arrangements. In those situations, the countertops and splashes are made into longer sections to eliminate seams. Electrical circuits may be run through the splashes to provide power to multiple stations. The student spacing will remain unchanged.



### Electrical stub out detail


### Additional Information

Assembly required - yes  
Electrical required - yes  
Plumbing required - no  
Wall blocking required - no  
COM yardage/laminate usage - 38 sf  
4"h laminated plywood toe + 1/4"h glides  
Other (specify) - n/a  
Other (specify) - n/a

### Specification Drawing

This **Specification Drawing** is intended for communicating the basic description, function, appearance, dimensions, features, and installation of an item as manufactured by Collins Manufacturing Company. Because this drawing does not contain project specific information such as quantities, finishes, or options, it is not an approval drawing and does not require a signature. This drawing remains the property of Collins Manufacturing Company and must not be used against the interests of Collins Manufacturing Company.

### Product Information

		Collins Manufacturing 2000 Bowser Road Cookeville, TN 38506	
Name: Theory Mannequin Station w/ Storage			
Size: NTS	Part Number: 2453-36		Drawn By: Eng
Prepared Date: 6/9/20	Revision Date: Date	Revision Number: Rev #	Sheet: 2 of 2