



## LILA DRYER CHAIR

SKU:2880



With its modern styling, the Lila Dryer Chair will be a standout in your salon. It features a sleek chrome style and a comfortable seat cushion with a slight rise for client comfort.

The beautiful flat armrests and the overall sleek design, adds elegance to any salon setting, while also creating a distinct style for your space.

Includes our cETL certified 1400 watts dryer, that features ion technology and temperatures reaching 150 ° F.

### TECHNICAL INFORMATION

- Overall size - 24.5"W x 32"D x 48"H
- Width between arms - 20.5"
- Height to seat - 18.5"
- Depth of seat - 19.5"

### SHIPPING INFORMATION

Item generally ships via Freight(Truck) service

- Weight: 84 lbs
- Dimensions: 2 Cartons

### WARRANTY

#### 7.5 Years:

- Models 3500, 4500, 5550 Foot Operated Hydraulic Pumps

#### 5 years:

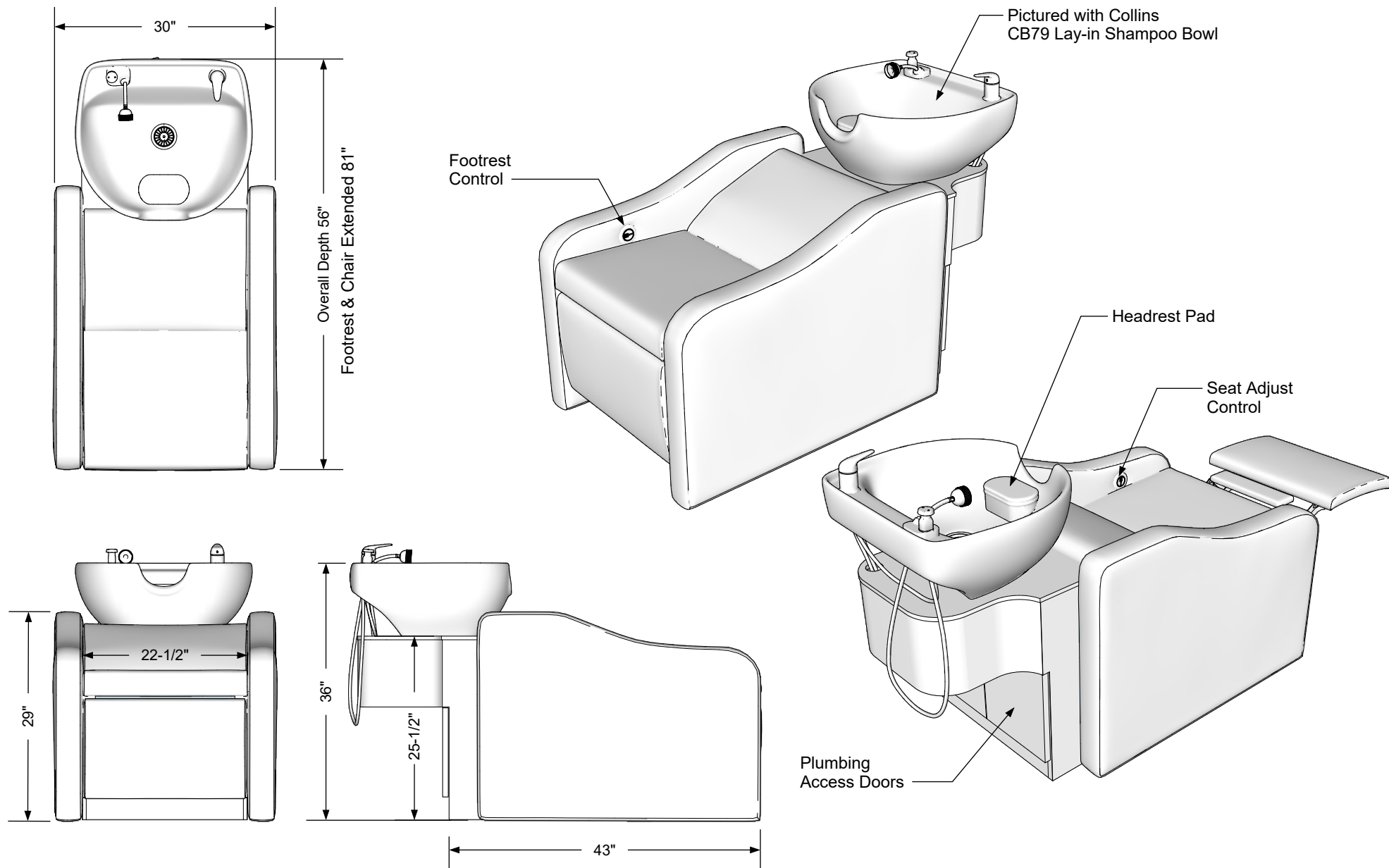
- Collins Comfort Zone anti-fatigue mats
- Collins all purpose and shampoo chair back reclining mechanisms
- Models 3250, 4250, 5250 Foot Operated Hydraulic Pumps

#### 3 Years:

- BKB Electric Base

#### 1 year:

- All remaining components, unless otherwise noted



### Additional Information

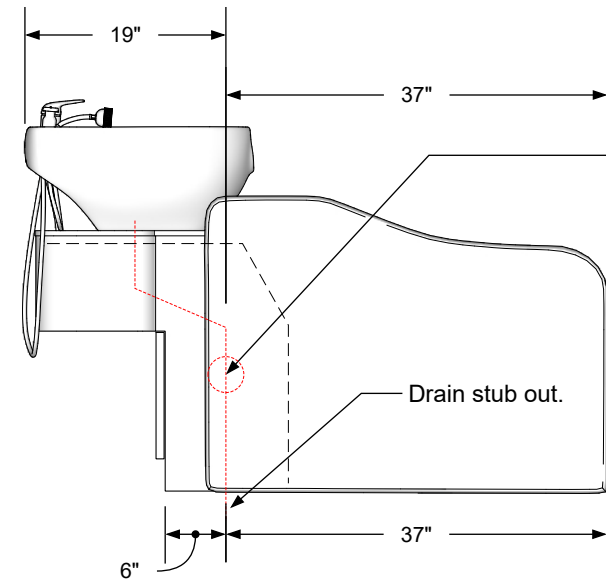
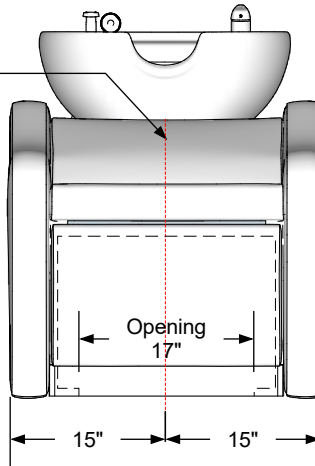
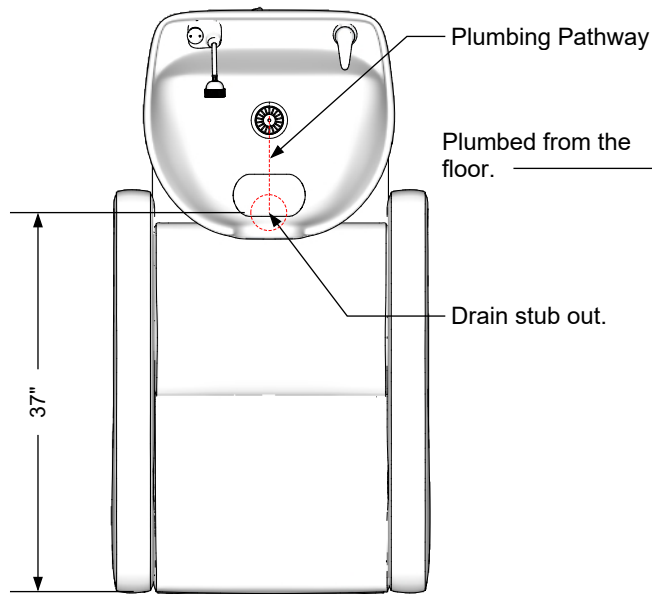
Assembly required - yes  
 Electrical required - yes  
 Plumbing required - yes  
 Wall blocking required - no  
 Other (specify) - n/a  
 Other (specify) - n/a  
 Other (specify) - n/a  
 Other (specify) - n/a

### Specification Drawing

This **Specification Drawing** is intended for communicating the basic description, function, appearance, dimensions, features, and installation of an item as manufactured by Collins Manufacturing Company. Because this drawing does not contain project specific information such as quantities, finishes, or options, it is not an approval drawing and does not require a signature. This drawing remains the property of Collins Manufacturing Company and must not be used against the interests of Collins Manufacturing Company.

### Product Information

<b>collins</b> Collins Manufacturing 2000 Bowser Road Cookeville, TN 38506			
Name: Nirvana Comfort Wash			
Size: NTS	Part Number: 2880	Drawn By: Eng	
Prepared Date: 2/15/21	Revision Date: 2/18/21	Revision Number: Rev 1	Sheet: 1 of 3

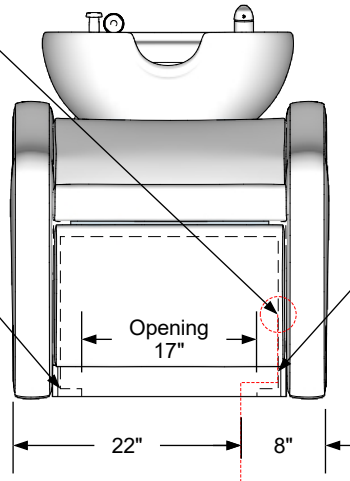


**Plumbing pathway**  
\* See Local Code  
for Trap / Venting  
Requirement

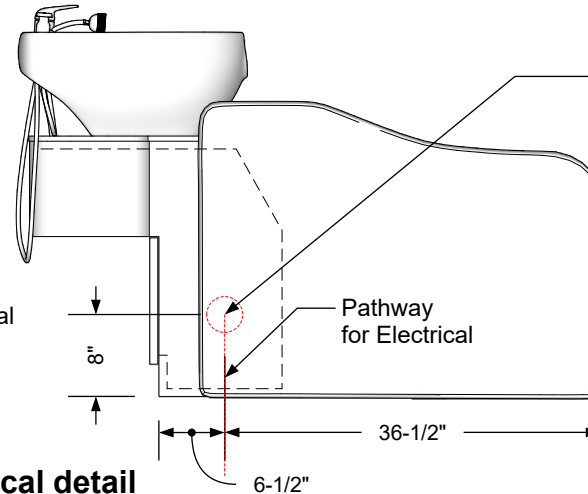
### Plumbing stub out detail **\*Please Consult Local Codes**

GFI Surface Mounted  
Outlet Recommended  
\*See Local Codes

Floor Anchoring  
Wings Inside  
Bowl Cabinet



Pathway  
for Electrical



**Integrated Transformer Plug**  
Input 100V~240V  
Output 29V 2A  
8 Foot Long  
Included with Shampoo Unit.

**\*Electrician is responsible to determine  
connection for power**

### Electrical detail **\*Please Consult Local Codes**

#### Additional Information

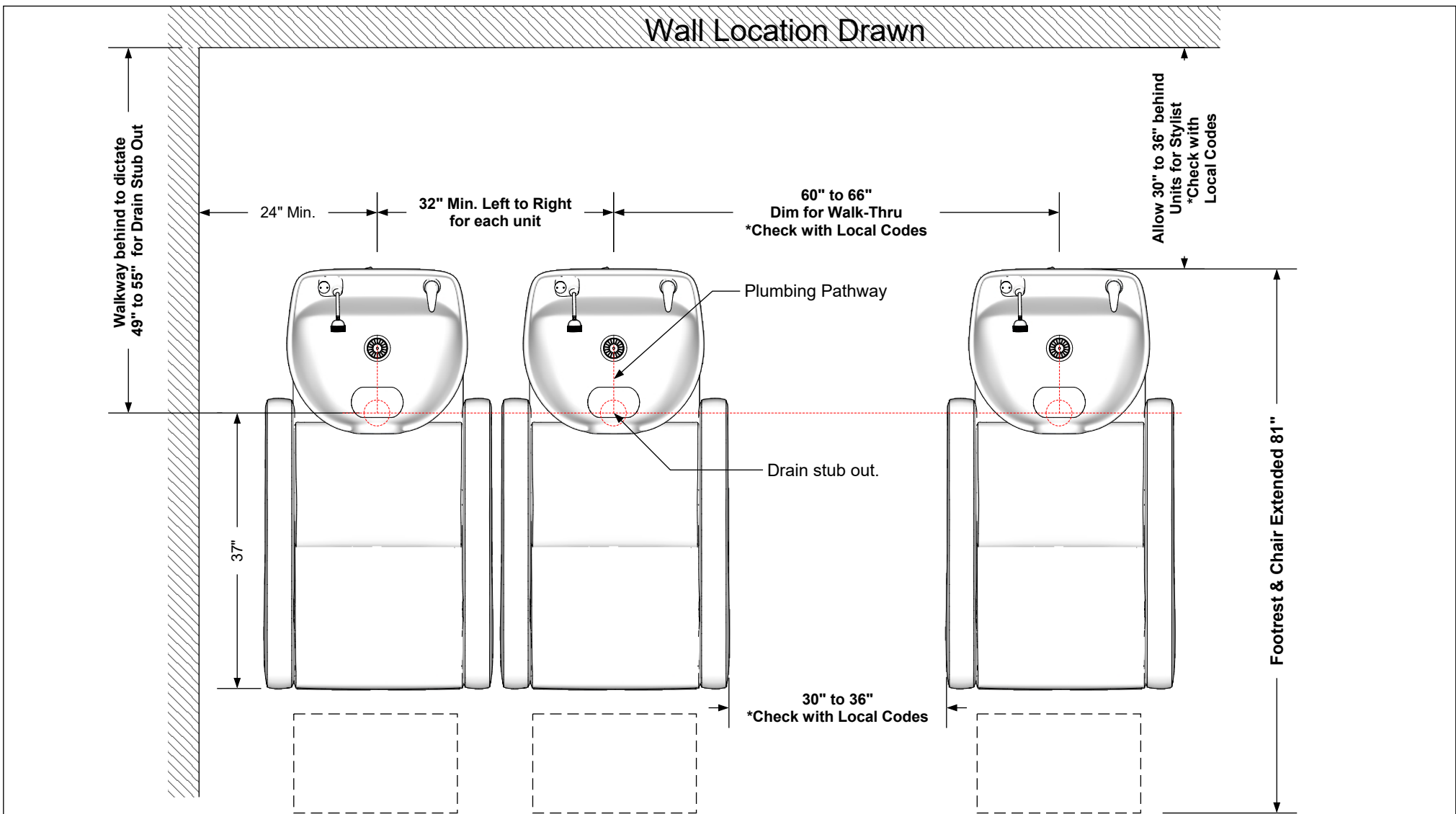
Assembly required - yes  
Electrical required - yes  
Plumbing required - yes  
Wall blocking required - no  
Other (specify) - n/a  
Other (specify) - n/a  
Other (specify) - n/a  
Other (specify) - n/a

#### Specification Drawing

This **Specification Drawing** is intended for communicating the basic description, function, appearance, dimensions, features, and installation of an item as manufactured by Collins Manufacturing Company. Because this drawing does not contain project specific information such as quantities, finishes, or options, it is not an approval drawing and does not require a signature. This drawing remains the property of Collins Manufacturing Company and must not be used against the interests of Collins Manufacturing Company.

#### Product Information

<b>collins</b> Collins Manufacturing 2000 Bowser Road Cookeville, TN 38506			
Name: Nirvana Comfort Wash			
Size: NTS	Part Number: 2880	Drawn By: Eng	
Prepared Date: 2/15/21	Revision Date: 2/18/21	Revision Number: Rev 1	Sheet: 2 of 3



**Multi Unit Recommended Spacing Configuration**  
**\*Please Consult Local Codes**


#### Additional Information

Assembly required - yes  
 Electrical required - yes  
 Plumbing required - yes  
 Wall blocking required - no  
 Other (specify) - n/a  
 Other (specify) - n/a  
 Other (specify) - n/a  
 Other (specify) - n/a

#### Specification Drawing

This **Specification Drawing** is intended for communicating the basic description, function, appearance, dimensions, features, and installation of an item as manufactured by Collins Manufacturing Company. Because this drawing does not contain project specific information such as quantities, finishes, or options, it is not an approval drawing and does not require a signature. This drawing remains the property of Collins Manufacturing Company and must not be used against the interests of Collins Manufacturing Company.

#### Product Information

		Collins Manufacturing 2000 Bowser Road Cookeville, TN 38506	
Name: Nirvana Comfort Wash			
Size: NTS	Part Number: 2880		Drawn By: Eng
Prepared Date: 2/15/21	Revision Date: 2/18/21	Revision Number: Rev 1	Sheet: 3 of 3